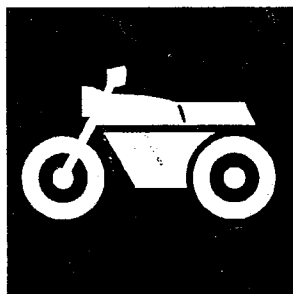


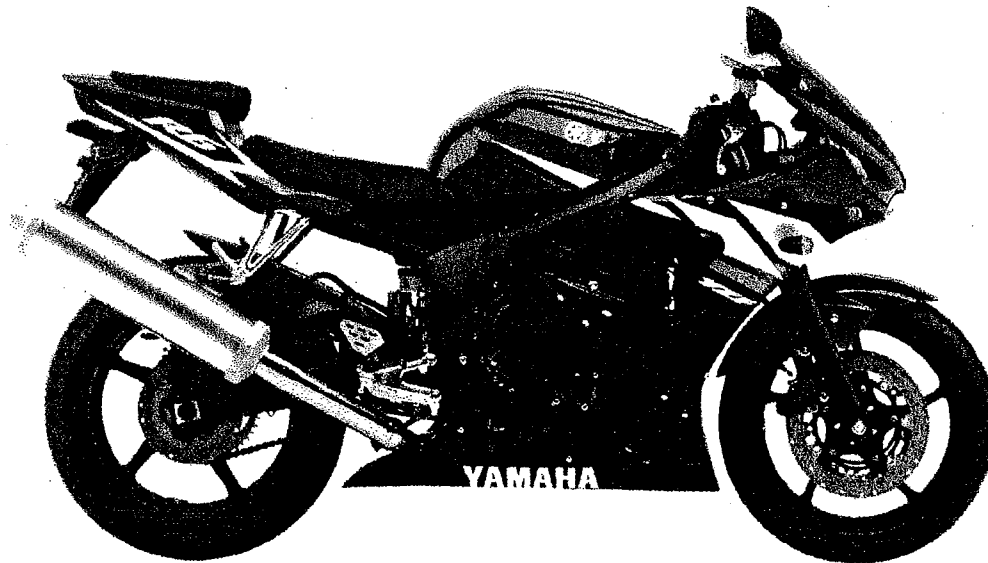
YAMAHA



**PARTS
CATALOGUE**

YZF-R6 (5SL1) EUROPE, SOUTH AFRICA

YZF-R6



A4

FOREWORD

This Parts Catalogue is related to the parts for the model(s) on the cover page. When you are ordering replacement parts, please refer to this Parts Catalogue and quote both part numbers and part names correctly.

1. Modifications or additions which have been made after the issue of the Parts Catalogue will be announced in the Yamaha Parts News.
It is advisable that you make the necessary corrections to the Parts Catalogue according to the Yamaha Parts News.

2. Abbreviations

The following abbreviations are used in this Parts Catalogue.

"UR" Use specified parts number.

"UN" Use as many as needed.

"AP" Alternate Parts

"LM" Locally Made (Parts need to be ordered locally)

"F#" Frame No. (Applicable machine No.)

"O/S" Over Size

3. The number of components for assembly

- Parts, which are to be supplied in an assembly, are listed with a dot (.) in front of the part name as shown below.
- The numeral appearing to the right of each component part indicates the quantity of parts for each assembly unit.

| PART NO. | DESCRIPTION | Q'TY | REMARKS |
|--------------|--------------------------|------|---------|
| 2F5-83310-60 | FRONT FLASHER LIGHT ASSY | 2 | |
| 115-83311-60 | .BULB (6V-18W) | 1 | |

4. Applicable colours of graphics are represented in the "REMARKS" as shown below.

| PART NO. | DESCRIPTION | Q'TY | REMARKS |
|-----------------|---------------------|------|---------|
| 2N4-24110-00-X5 | FUEL TANK COMP. | 2 | MXR |
| 3J1-24240-10 | .GRAPHIC, FUEL TANK | 1 | FOR MXR |

5. Note that the illustrations for reference in finding parts numbers are not to be used for assembling. When assembling, please use the applicable service manual.

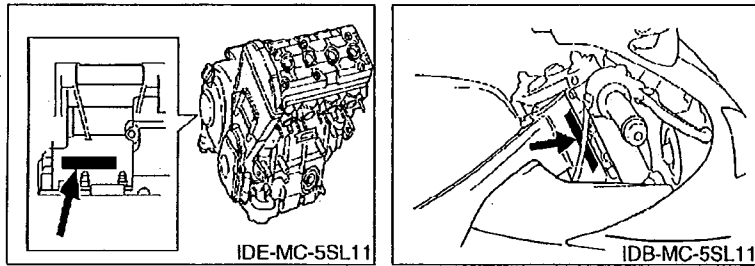
6. The asterisk (*) before a reference number indicates modified items after the first edition.

FOREWORD

7. Applicable Serial No.

Engine Serial No.

Frame Serial No.



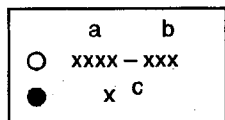
8. Applicable Colour Code

| Abbreviation | Colour Name | Colour Code |
|--------------|-------------------------------|-------------|
| BL2 | BLACK 2 | 004B |
| DPBMC | DEEP PURPLISH BLUE METALLIC C | 0564 |
| LGB | LOW GLOSS BLACK | 0098 |
| MBL2 | MAT BLACK 2 | 0582 |
| RYC1 | REDDISH YELLOW COCKTAIL 1 | 0251 |
| S3 | SILVER 3 | 0791 |
| VRC1 | VIVID RED COCKTAIL 1 | 0121 |
| | | |
| | | |
| | | |

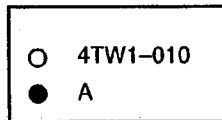
MODEL LABEL

(1) A label called "Model Label" is affixed in the location as indicated in (3) below. When using this parts catalogue, please be sure to cross-reference the "model code – production code No." in the catalogue with the "model code – production code No." indicated on the Model Label affixed onto the product concerned.

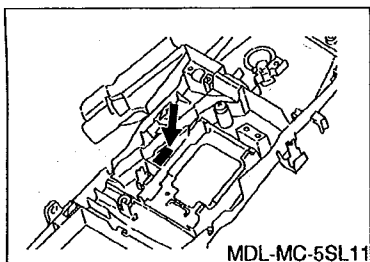
(2) "Model Label" Indication



a: Model Type Code
b: Production Code No.
c: Colouring Type



(3) Model Label Affixing Location



(4) Colouring Information

| Model Code | Colouring Type Code | Colour Code | Colour Name | Abbreviation |
|------------|---------------------|-------------|-------------------------------|--------------|
| 5SL1 | A | 0121 | VIVID RED COCKTAIL 1 | VRC1 |
| | B | 0564 | DEEP PURPLISH BLUE METALLIC C | DPBMC |
| | C | 0791 | SILVER 3 | S3 |
| | D | 0251 | REDDISH YELLOW COCKTAIL 1 | RYC1 |
| | | | | |
| | | | | |
| | | | | |
| | | | | |

(5) Model Code – Production Code Number of Model Listed in This Parts Catalogue

| Model Code | Production Code No. | Country (destination) | Model Code | Production Code No. | Country (destination) |
|------------|---------------------|-----------------------|------------|---------------------|-----------------------|
| 5SL1 | 010 | ITALY | | | |
| | 020 | BELGIUM | | | |
| | 040 | DENMARK | | | |
| | | NORWAY | | | |
| | 060 | UNITED KINGDOM | | | |
| | 070 | GREECE | | | |
| | 080 | NETHERLANDS | | | |
| | 090 | PORTUGAL | | | |
| | 100 | SWEDEN | | | |
| | 110 | SOUTH AFRICA | | | |
| | | | | | |
| | | | | | |
| | | | | | |
| | | | | | |
| | | | | | |
| | | | | | |
| | | | | | |
| | | | | | |

CONTENTS

ENGINE

| | |
|----------------------------|-----|
| CYLINDER | B2 |
| CRANKSHAFT. PISTON | B3 |
| VALVE | B4 |
| CAMSHAFT. CHAIN | B6 |
| WATER PUMP | B7 |
| RADIATOR. HOSE | B8 |
| OIL PUMP | B10 |
| OIL CLEANER | B11 |
| INTAKE | B12 |
| INTAKE 2 | B14 |
| AIR INDUCTION SYSTEM | C2 |
| EXHAUST | C3 |
| CRANKCASE | C4 |
| CRANKCASE COVER 1 | C6 |
| STARTER | C8 |
| CLUTCH | C9 |
| TRANSMISSION | C11 |
| SHIFT CAM. FORK | C13 |
| SHIFT SHAFT | C14 |

CHASSIS

| | |
|------------------------------|-----|
| FRAME | C15 |
| FENDER | D3 |
| SIDE COVER | D5 |
| REAR ARM | D7 |
| REAR SUSPENSION | D9 |
| STEERING | D10 |
| FRONT FORK | D11 |
| FUEL TANK | D13 |
| SEAT | D15 |
| FRONT WHEEL | E2 |
| FRONT BRAKE CALIPER | E3 |
| REAR WHEEL | E4 |
| REAR BRAKE CALIPER | E6 |
| STEERING HANDLE. CABLE | E7 |
| FRONT MASTER CYLINDER | E8 |
| STAND. FOOTREST | E10 |
| REAR MASTER CYLINDER | E13 |
| COWLING 1 | E15 |
| COWLING 2 | F3 |
| GENERATOR | F6 |

| | |
|----------------------------|-----|
| STARTING MOTOR | F7 |
| FLASHER LIGHT | F8 |
| METER | F9 |
| HEADLIGHT | F10 |
| TAILLIGHT | F11 |
| HANDLE SWITCH. LEVER | F12 |
| ELECTRICAL 1 | F13 |
| ELECTRICAL 2 | F14 |

INDEX

| | |
|-----------------------|----|
| NUMERICAL INDEX | M1 |
|-----------------------|----|

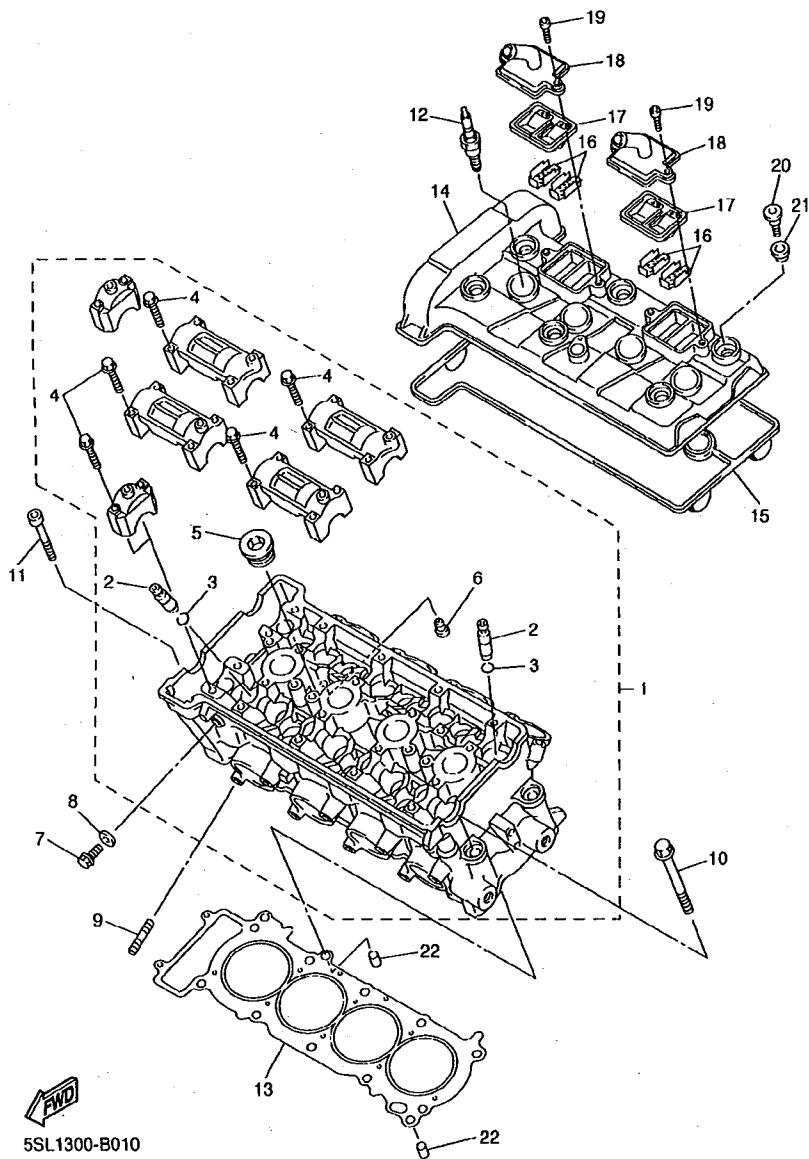
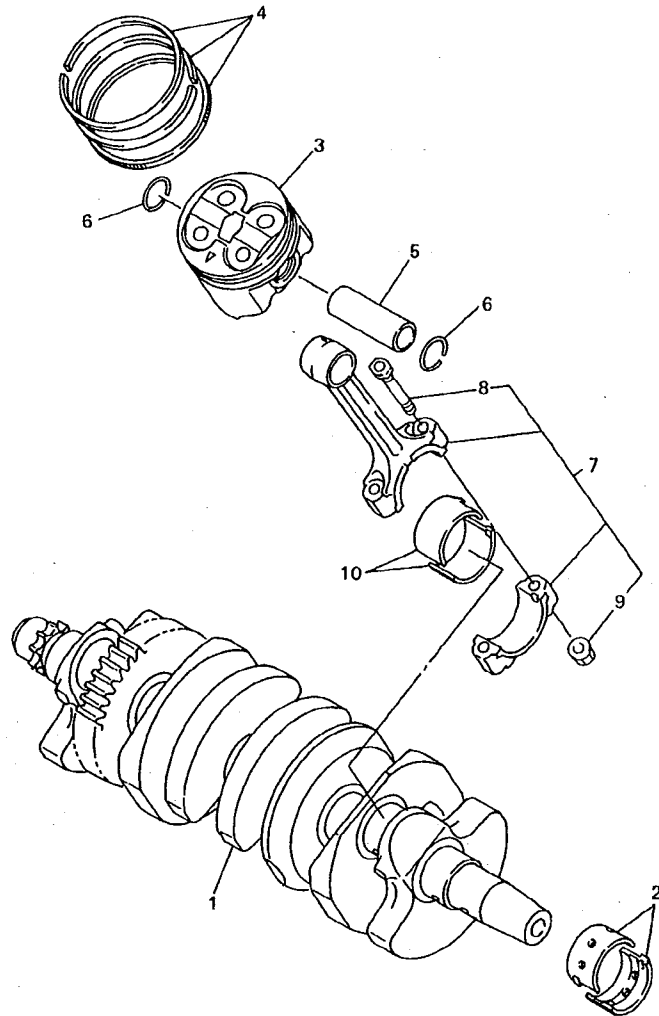


FIG. 1 CYLINDER

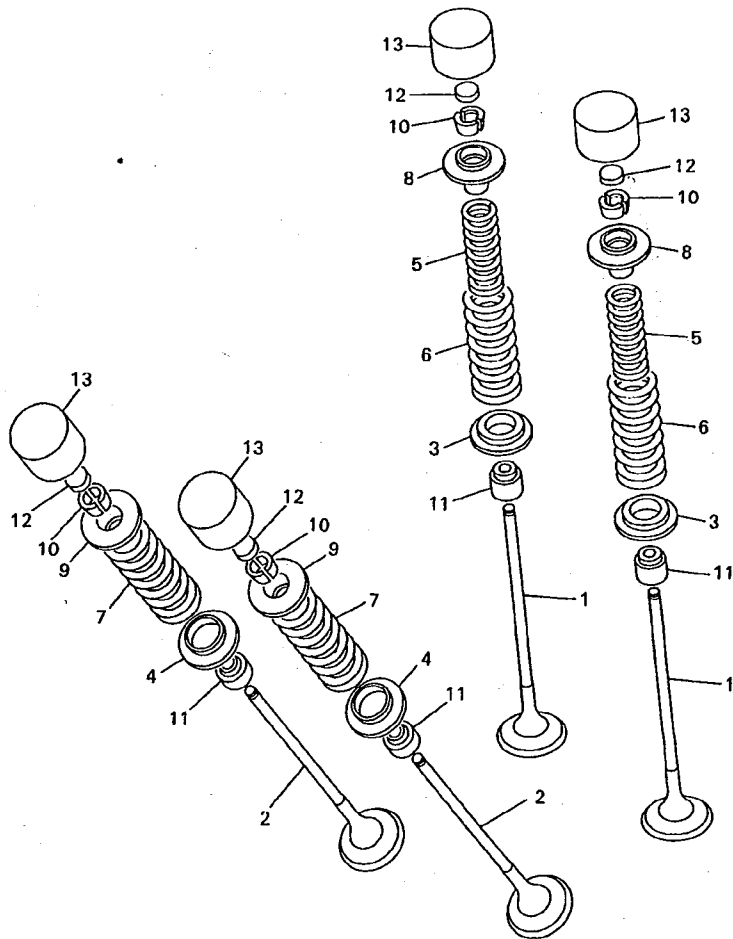
| REF. NO. | PART NO. | DESCRIPTION | SSL | | | | REMARKS |
|----------|--------------|---------------------------|-----|--|--|--|---------|
| 1 | 5SL-11101-00 | CYLINDER HEAD ASSY | 1 | | | | |
| 2 | 5EB-11133-10 | .GUIDE, INTAKE VALVE | 16 | | | | |
| 3 | 93440-10153 | .CIRCLIP | 16 | | | | |
| 4 | 90105-06027 | .BOLT, FLANGE | 20 | | | | |
| 5 | 90340-20090 | .PLUG, STRAIGHT SCREW | 3 | | | | |
| 6 | 11H-15138-00 | .NOZZLE 1 | 1 | | | | |
| 7 | 95027-08012 | BOLT, FLANGE | 1 | | | | |
| 8 | 90430-08119 | GASKET | 1 | | | | |
| 9 | 95617-08625 | BOLT, STUD | 8 | | | | |
| 10 | 90119-10003 | BOLT, WITH WASHER | 10 | | | | |
| 11 | 91317-08080 | BOLT | 2 | | | | |
| 12 | 94701-00402 | PLUG, SPARK (NGK CR10EK) | 4 | | | | |
| 13 | 5SL-11181-00 | GASKET, CYLINDER HEAD 1 | 1 | | | | |
| 14 | 5SL-11191-00 | COVER, CYLINDER HEAD 1 | 1 | | | | |
| 15 | 5SL-11193-00 | GASKET, HEAD COVER 1 | 1 | | | | |
| 16 | 5SL-1482K-00 | PLATE | 4 | | | | |
| 17 | 5SL-14890-00 | REED VALVE ASS | 2 | | | | |
| 18 | 5SL-14899-00 | CAP, CASE | 2 | | | | |
| 19 | 90110-08073 | BOLT, HEXAGON SOCKET HEAD | 4 | | | | |
| 20 | 90109-066F0 | BOLT | 6 | | | | |
| 21 | 4KG-1111G-00 | RUBBER, MOUNT 1 | 6 | | | | |
| 22 | 99530-10114 | PIN, DOWEL | 2 | | | | |



5EB3351-9020

FIG. 2 CRANKSHAFT. PISTON

| REF. NO. | PART NO. | DESCRIPTION | SSL | REMARKS |
|----------|--------------|-------------------------------|-----|----------|
| 1 | 5SL-11411-00 | CRANKSHAFT | 1 | |
| 2 | 5EB-11416-A0 | PLANE BEARING, CRANKSHAFT 1 | 10 | UR WHITE |
| | 5EB-11416-00 | PLANE BEARING, CRANKSHAFT 1 | 10 | UR BLUE |
| | 5EB-11416-10 | PLANE BEARING, CRANKSHAFT 1 | 10 | UR BLACK |
| | 5EB-11416-20 | PLANE BEARING, CRANKSHAFT 1 | 10 | UR BROWN |
| | 5EB-11416-30 | PLANE BEARING, CRANKSHAFT 1 | 10 | UR GREEN |
| 3 | 5SL-11631-00 | PISTON (STD) | 4 | |
| 4 | 5SL-11603-00 | PISTON RING SET (STD) | 4 | |
| 5 | 5SL-11633-00 | PIN, PISTON | 4 | |
| 6 | 93450-17129 | CIRCLIP | 8 | |
| 7 | 5SL-11650-00 | CONNECTING ROD ASSY | 4 | |
| 8 | 5SL-11654-00 | .BOLT, CONNECTING ROD | 2 | |
| 9 | 90179-07652 | .NUT | 2 | |
| 10 | 5SL-11656-00 | PLANE BEARING, CONNECTING ROD | 8 | UR BLUE |
| | 5SL-11656-10 | PLANE BEARING, CONNECTING ROD | 8 | UR BLACK |
| | 5SL-11656-20 | PLANE BEARING, CONNECTING ROD | 8 | UR BROWN |
| | 5SL-11656-30 | PLANE BEARING, CONNECTING ROD | 8 | UR GREEN |



5EB3351-9030

FIG. 3 VALVE

| REF. NO. | PART NO. | DESCRIPTION | SSL | REMARKS |
|----------|--------------|-------------------------|-----|---------|
| 1 | 5EB-12111-00 | VALVE, INTAKE | 8 | |
| 2 | 5SL-12121-00 | VALVE, EXHAUST | 8 | |
| 3 | 5SL-12116-00 | SEAT, VALVE SPRING | 8 | |
| 4 | 5EB-12126-00 | SEAT, VALVE SPRING 2 | 8 | |
| 5 | 5SL-12113-00 | SPRING, VALVE INNER | 8 | |
| 6 | 5SL-12114-00 | SPRING, VALVE OUTER | 8 | |
| 7 | 5EB-12124-01 | SPRING, VALVE OUTER | 8 | |
| 8 | 5EB-12117-00 | RETAINER, VALVE SPRING | 8 | |
| 9 | 5EB-12127-00 | RETAINER, VALVE SPRING | 8 | |
| 10 | 1HX-12118-00 | COTTER, VALVE | 32 | |
| 11 | 4TV-12119-00 | SEAL, VALVE STEM | 16 | |
| 12 | 1HX-12168-00 | PAD, ADJUSTING 2 (1.20) | 16 | UR |
| | 1HX-12168-20 | PAD, ADJUSTING 2 (1.25) | 16 | UR |
| | 1HX-12168-40 | PAD, ADJUSTING 2 (1.30) | 16 | UR |
| | 1HX-12168-60 | PAD, ADJUSTING 2 (1.35) | 16 | UR |
| | 1HX-12168-80 | PAD, ADJUSTING 2 (1.40) | 16 | UR |
| | 1HX-12168-A0 | PAD, ADJUSTING 2 (1.45) | 16 | UR |
| | 1HX-12168-F0 | PAD, ADJUSTING 2 (1.50) | 16 | UR |
| | 1HX-12168-H1 | PAD, ADJUSTING 2 (1.55) | 16 | UR |
| | 1HX-12168-K1 | PAD, ADJUSTING 2 (1.60) | 16 | UR |
| | 1HX-12168-M1 | PAD, ADJUSTING 2 (1.65) | 16 | UR |
| | 1HX-12168-R1 | PAD, ADJUSTING 2 (1.70) | 16 | UR |
| | 1HX-12168-U1 | PAD, ADJUSTING 2 (1.75) | 16 | UR |
| | 1HX-12168-W1 | PAD, ADJUSTING 2 (1.80) | 16 | UR |
| | 1HX-12168-Y1 | PAD, ADJUSTING 2 (1.85) | 16 | UR |
| | 1HX-12169-11 | PAD, ADJUSTING 2 (1.90) | 16 | UR |
| | 1HX-12169-31 | PAD, ADJUSTING 2 (1.95) | 16 | UR |

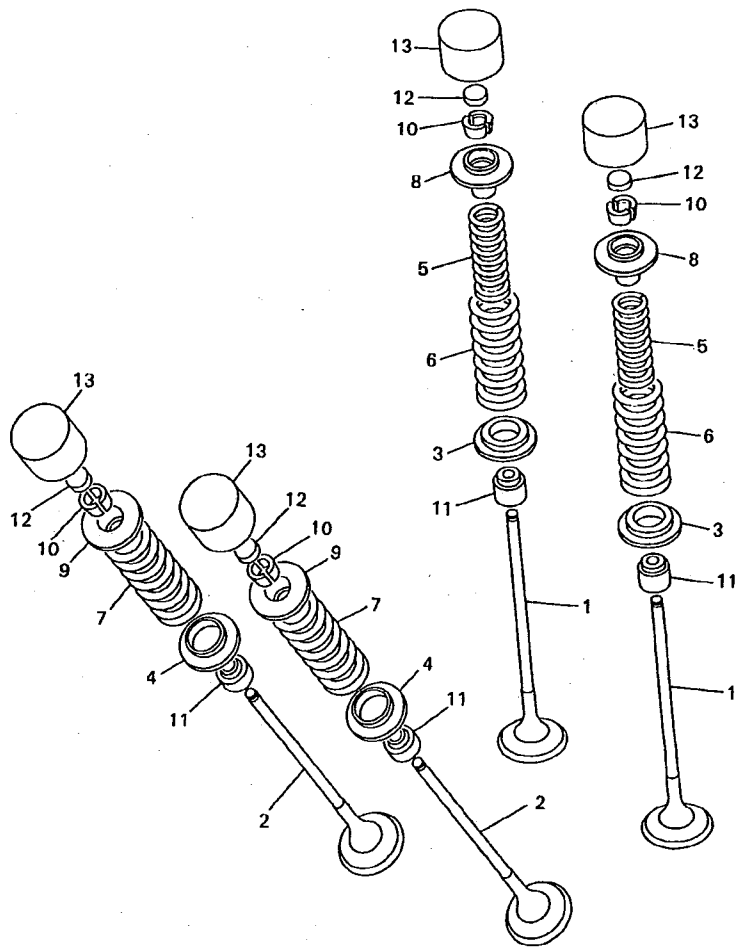


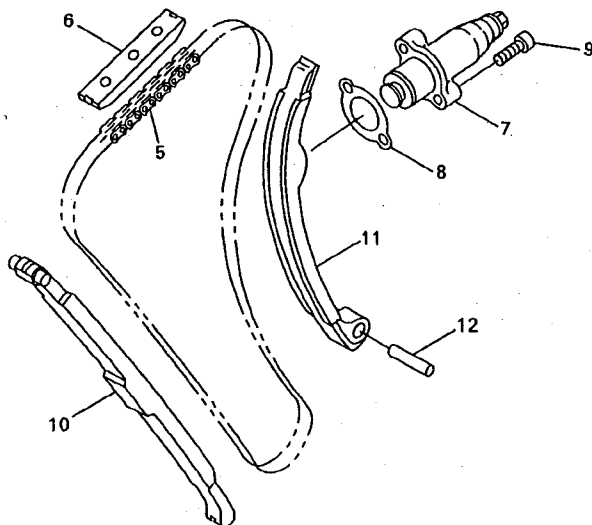
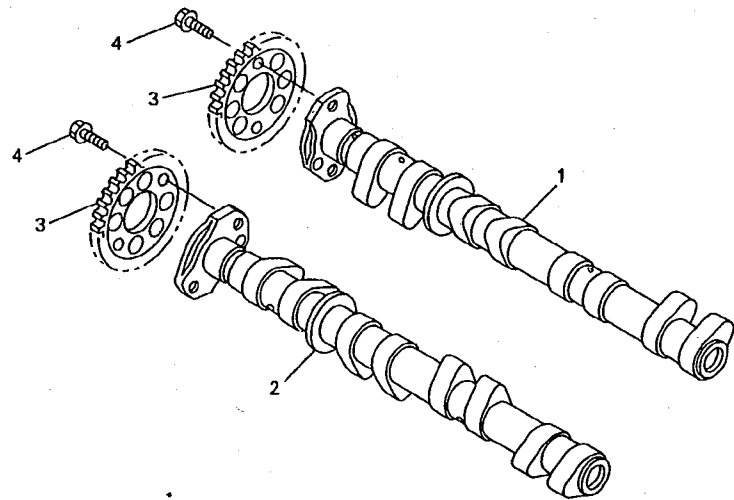
FIG. 3 VALVE

| REF. NO. | PART NO. | DESCRIPTION | SSLT | REMARKS |
|----------|--------------|-------------------------|------|----------|
| 12 | 1HX-12169-50 | PAD, ADJUSTING 2 (2.00) | 16 | UR |
| | 1HX-12169-70 | PAD, ADJUSTING 2 (2.05) | 16 | UR |
| | 1HX-12169-90 | PAD, ADJUSTING 2 (2.10) | 16 | UR |
| | 1HX-12169-E0 | PAD, ADJUSTING 2 (2.15) | 16 | UR |
| | 1HX-12169-G0 | PAD, ADJUSTING 2 (2.20) | 16 | UR |
| | 1HX-12169-J0 | PAD, ADJUSTING 2 (2.25) | 16 | UR |
| | 1HX-12169-L0 | PAD, ADJUSTING 2 (2.30) | 16 | UR |
| | 1HX-12169-N0 | PAD, ADJUSTING 2 (2.35) | 16 | UR |
| | 1HX-12169-T0 | PAD, ADJUSTING 2 (2.40) | 16 | UR |
| 13 | 5EB-12153-20 | LIFTER, VALVE | 16 | UR BLUE |
| | 5EB-12153-09 | LIFTER, VALVE | 16 | AP GREEN |



5EB3351-9030

B5



5MT3351-1040

FIG. 4 CAMSHAFT. CHAIN

| REF. NO. | PART NO. | DESCRIPTION | SSL | | | | REMARKS |
|----------|--------------|---------------------------|-----|--|--|--|---------|
| 1 | 5SL-12170-00 | CAMSHAFT ASSY 1 | 1 | | | | |
| 2 | 5SL-12180-00 | CAMSHAFT ASSY 2 | 1 | | | | |
| 3 | 5EB-12176-00 | SPROCKET, CAM CHAIN | 2 | | | | |
| 4 | 90105-07342 | BOLT, FLANGE | 4 | | | | |
| 5 | 94591-49120 | CHAIN | 1 | | | | |
| 6 | 5BE-12241-00 | GUIDE, STOPPER 2 | 1 | | | | |
| 7 | 5SL-12210-10 | TENSIONER ASSY, CAM CHAIN | 1 | | | | |
| 8 | 4FM-12213-00 | GASKET, TENSIONER CASE | 1 | | | | |
| 9 | 91317-06025 | BOLT | 2 | | | | |
| 10 | 5EB-12251-00 | DAMPER, CHAIN 1 | 1 | | | | |
| 11 | 5EB-12252-10 | DAMPER, CHAIN 2 | 1 | | | | |
| 12 | 93607-44190 | PIN, DOWEL | 1 | | | | |

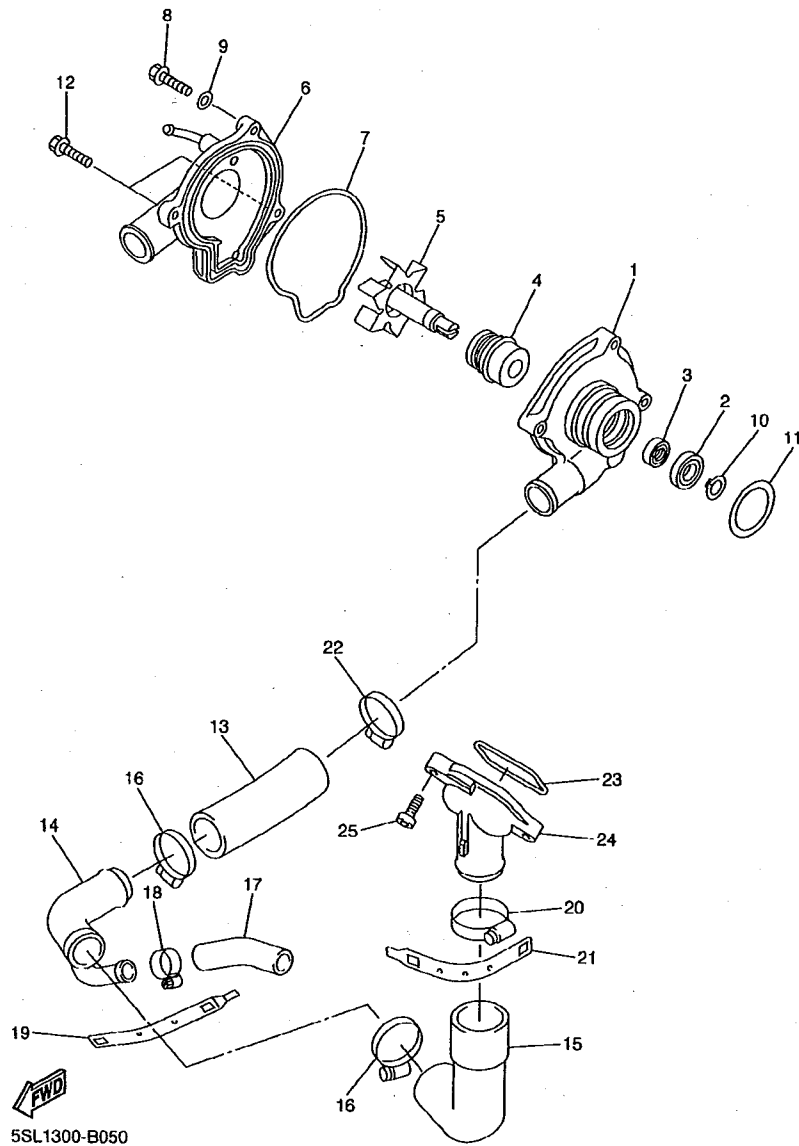
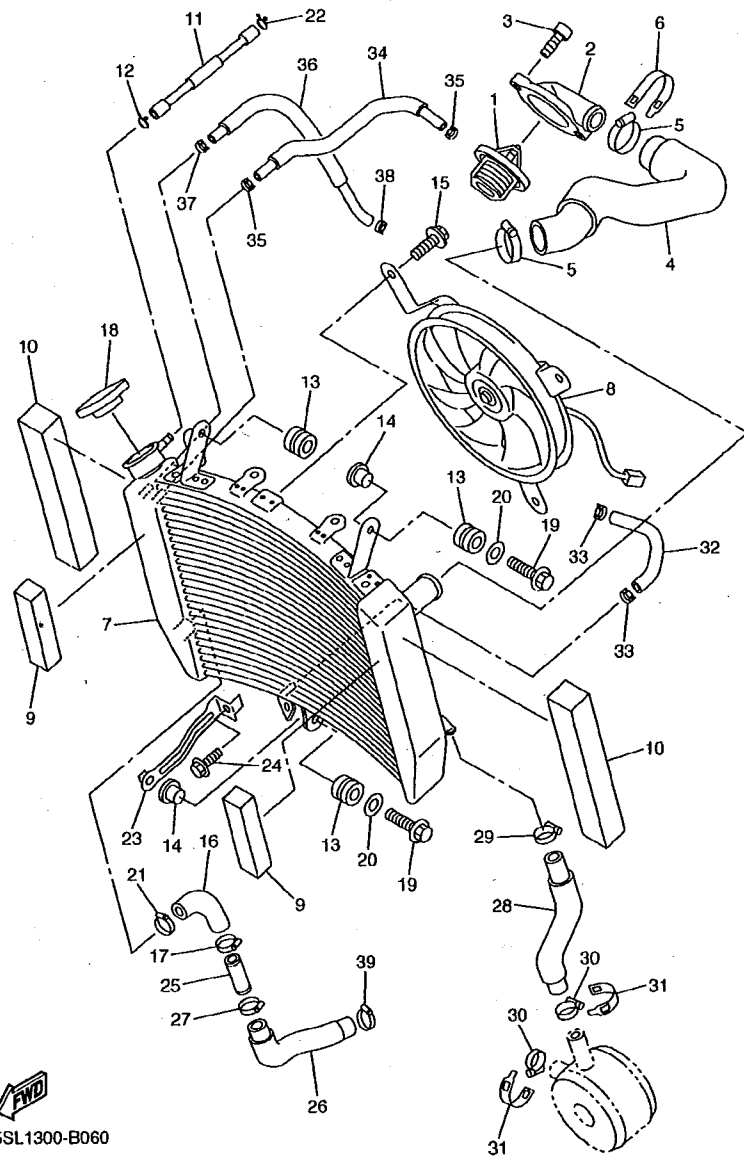


FIG. 5 WATER PUMP

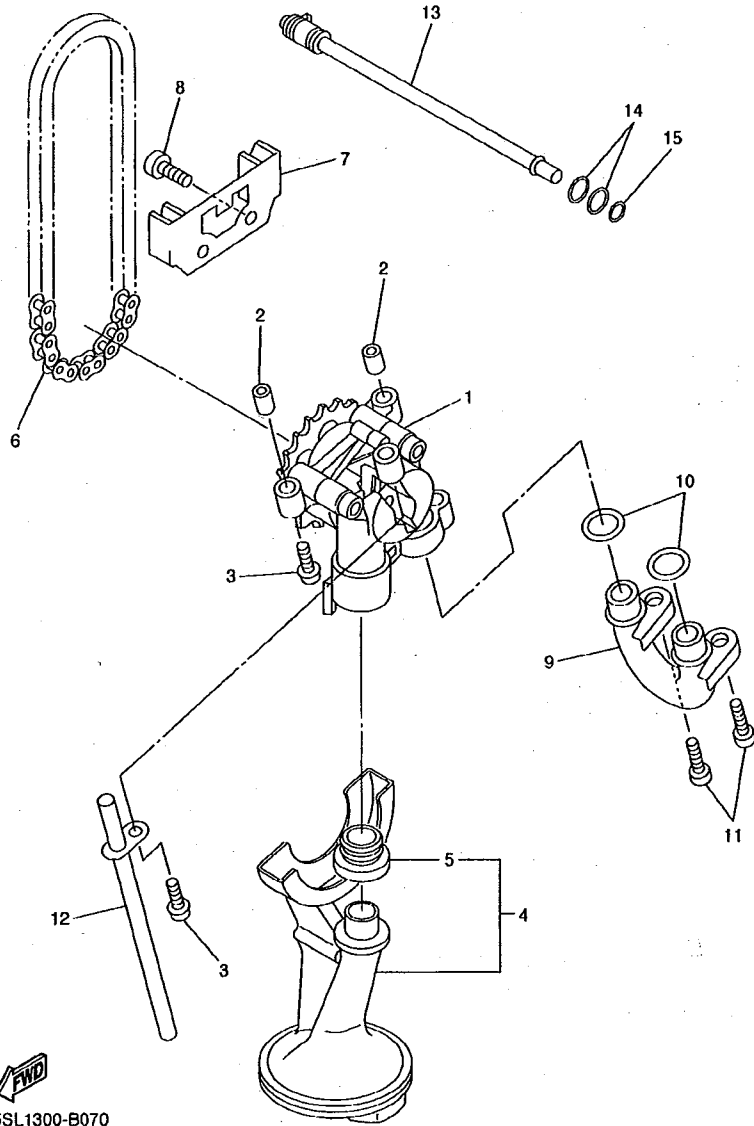
| REF. NO. | PART NO. | DESCRIPTION | SSL1 | | | | REMARKS |
|----------|--------------|---------------------------|------|--|--|--|---------|
| 1 | 5EB-12421-00 | HOUSING, WATER PUMP | 1 | | | | |
| 2 | 93306-00106 | BEARING | 1 | | | | |
| 3 | 93101-12173 | OIL SEAL | 1 | | | | |
| 4 | 11H-12438-10 | SEAL, MECHANICAL | 1 | | | | |
| 5 | 5EB-12450-00 | IMPELLER SHAFT ASSY | 1 | | | | |
| 6 | 5SL-12422-00 | COVER, HOUSING | 1 | | | | |
| 7 | 5EB-12439-00 | O-RING | 1 | | | | |
| 8 | 95024-06020 | BOLT, FLANGE | 2 | | | | |
| 9 | 90430-06014 | GASKET | 1 | | | | |
| 10 | 99009-12400 | CIRCLIP | 1 | | | | |
| 11 | 93210-33133 | O-RING | 1 | | | | |
| 12 | 90110-06149 | BOLT, HEXAGON SOCKET HEAD | 2 | | | | |
| 13 | 4NK-12579-00 | HOSE 4 | 1 | | | | |
| 14 | 5EB-12581-00 | JOINT, HOSE 1 | 1 | | | | |
| 15 | 5EB-12577-00 | HOSE 2 | 1 | | | | |
| 16 | 90450-35001 | HOSE CLAMP ASSY | 2 | | | | |
| 17 | 5SL-12588-00 | HOSE 5 | 1 | | | | |
| 18 | 90450-22017 | HOSE CLAMP ASSY | 1 | | | | |
| 19 | 5GV-1246E-00 | COVER 2 | 1 | | | | |
| 20 | 90450-38040 | HOSE CLAMP ASSY | 1 | | | | |
| 21 | 5GV-1246A-00 | COVER 1 | 1 | | | | |
| 22 | 90450-32001 | HOSE CLAMP ASSY | 1 | | | | |
| 23 | 93210-47675 | O-RING | 1 | | | | |
| 24 | 5EB-12469-00 | JOINT 1 | 1 | | | | |
| 25 | 95027-06020 | BOLT, FLANGE | 2 | | | | |



5SL1300-B060

FIG. 6 RADIATOR. HOSE

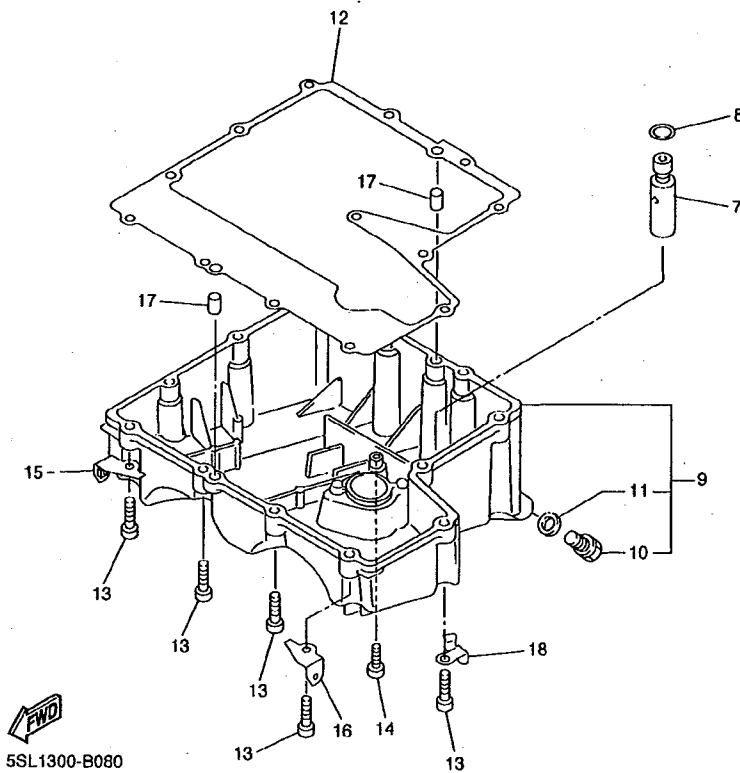
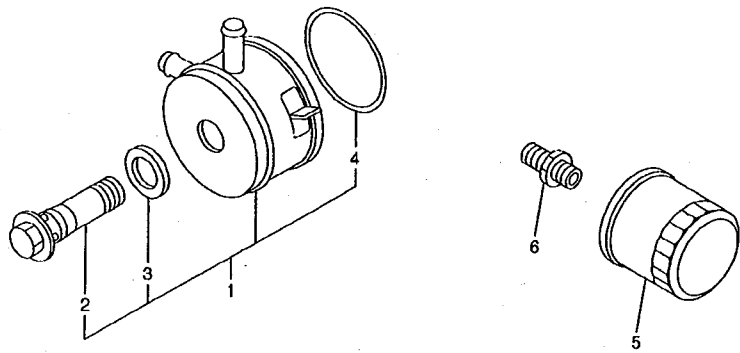
| REF. NO. | PART NO. | DESCRIPTION | 5SL1 | REMARKS |
|----------|--------------|----------------------|------|---------|
| 1 | 5SL-12410-00 | THERMOSTAT ASSY | 1 | |
| 2 | 5EB-12413-00 | COVER, THERMOSTAT | 1 | |
| 3 | 91317-06020 | BOLT | 2 | |
| 4 | 5SL-12578-00 | HOSE 3 | 1 | |
| 5 | 90450-35001 | HOSE CLAMP ASSY | 2 | |
| 6 | 5GV-1246E-00 | COVER 2 | 1 | |
| 7 | 5SL-12461-00 | RADIATOR ASSY | 1 | |
| 8 | 5SL-12405-00 | BLOWER ASSY | 1 | |
| 9 | 5EB-12659-00 | DAMPER, AIR SHROUD 2 | 2 | |
| 10 | 5EB-12668-00 | DAMPER, AIR SHROUD 3 | 2 | |
| 11 | 90445-08016 | HOSE | 1 | |
| 12 | 90467-08075 | CLIP | 1 | |
| 13 | 90480-15363 | GROMMET | 3 | |
| 14 | 90387-07391 | COLLAR | 2 | |
| 15 | 5GJ-12675-00 | BOLT, BLOWER HOLDING | 3 | |
| 16 | 5SL-12579-00 | HOSE 4 | 1 | |
| 17 | 90450-35001 | HOSE CLAMP ASSY | 1 | |
| 18 | 5SL-12462-00 | CAP, RADIATOR | 1 | |
| 19 | 90105-06040 | BOLT, FLANGE | 2 | |
| 20 | 90201-06071 | WASHER, PLATE | 2 | |
| 21 | 90450-35001 | HOSE CLAMP ASSY | 1 | |
| 22 | 90467-08075 | CLIP | 1 | |
| 23 | 5SL-1244E-00 | BRACKET 1 | 1 | |
| 24 | 95827-06012 | BOLT, FLANGE | 1 | |
| 25 | 5SL-12582-00 | JOINT, HOSE 2 | 1 | |
| 26 | 5SL-12551-00 | HOSE 7 | 1 | |
| 27 | 90450-35001 | HOSE CLAMP ASSY | 1 | |




5SL1300-B070

FIG. 7 OIL PUMP

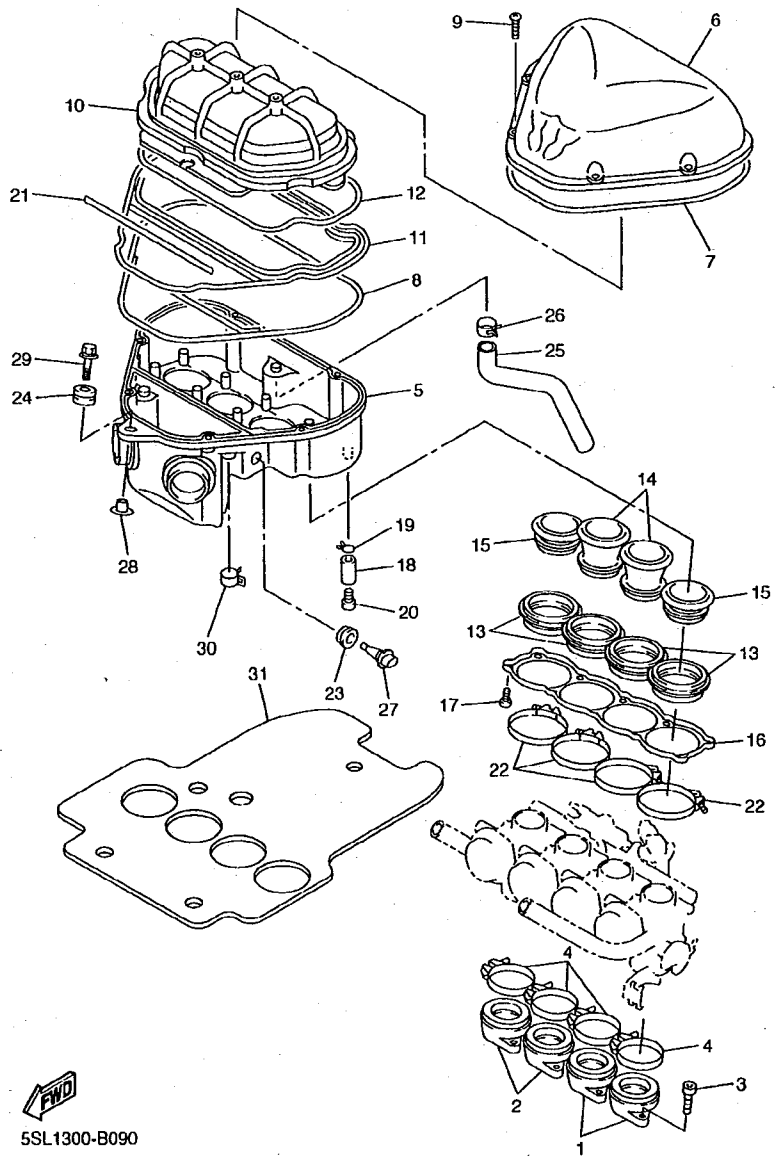
| REF. NO. | PART NO. | DESCRIPTION | SSL1 | | | | REMARKS |
|----------|--------------|---------------------------|------|--|--|--|---------|
| 1 | 5MT-13300-00 | OIL PUMP ASSY | 1 | | | | |
| 2 | 91808-17032 | PIN, DOWEL | 2 | | | | |
| 3 | 90109-06031 | BOLT | 3 | | | | |
| 4 | 5SL-13410-00 | STRAINER HOUSING ASSY | 1 | | | | |
| 5 | 5EB-13415-00 | .SEAL, OIL STRAINER | 1 | | | | |
| 6 | 94580-25080 | CHAIN | 1 | | | | |
| 7 | 5EB-13898-00 | HOLDER | 1 | | | | |
| 8 | 90110-06041 | BOLT, HEXAGON SOCKET HEAD | 2 | | | | |
| 9 | 5JW-13416-00 | PIPE, OIL 1 | 1 | | | | |
| 10 | 93210-14003 | O-RING | 2 | | | | |
| 11 | 90110-06041 | BOLT, HEXAGON SOCKET HEAD | 2 | | | | |
| 12 | 5EB-13161-00 | PIPE, DELIVERY 1 | 1 | | | | |
| 13 | 5EB-1316E-00 | PIPE, DELEVERY 5 | 1 | | | | |
| 14 | 93210-09165 | O-RING | 2 | | | | |
| 15 | 93210-06667 | O-RING | 1 | | | | |
| | | | | | | | |
| | | | | | | | |
| | | | | | | | |
| | | | | | | | |
| | | | | | | | |



5SL1300-B080

FIG. 8 OIL CLEANER

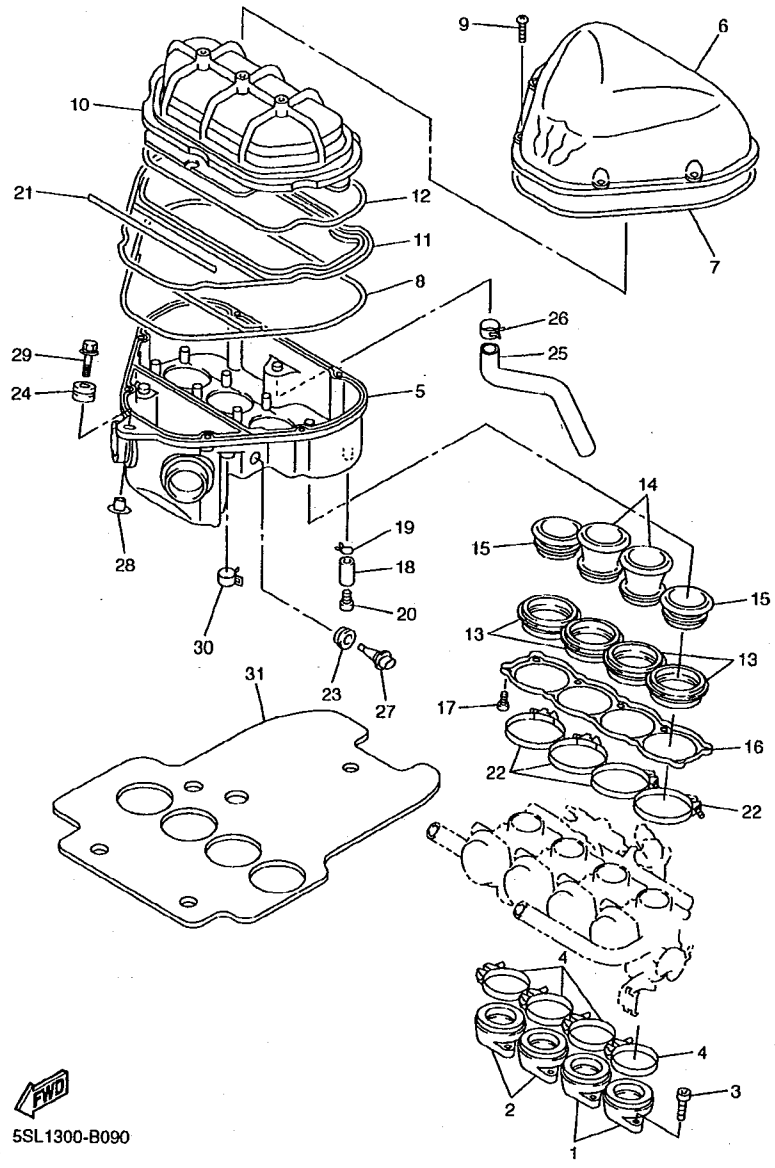
| REF. NO. | PART NO. | DESCRIPTION | 5SL1 | | | | REMARKS |
|----------|--------------|---------------------------|------|--|--|--|---------|
| 1 | 5EB-13470-00 | OIL COOLER ASSY | 1 | | | | |
| 2 | 5EB-12822-00 | .BOLT, UNION | 1 | | | | |
| 3 | 5EB-13475-00 | .GASKET | 1 | | | | |
| 4 | 4JH-13473-00 | .O-RING | 1 | | | | |
| 5 | 5GH-13440-00 | ELEMENT ASSY, OIL CLEANER | 1 | | | | |
| 6 | 90401-20145 | BOLT, UNION | 1 | | | | |
| 7 | 3KS-13490-00 | RELIEF VALVE ASSY | 1 | | | | |
| 8 | 93210-15566 | O-RING | 1 | | | | |
| 9 | 5SL-13417-00 | COVER, STRAINER | 1 | | | | |
| 10 | 90340-14132 | .PLUG, STRAIGHT SCREW | 1 | | | | |
| 11 | 214-11198-01 | .GASKET | 1 | | | | |
| 12 | 5SL-13414-00 | GASKET, STRAINER COVER | 1 | | | | |
| 13 | 91317-06025 | BOLT | 12 | | | | |
| 14 | 90110-06020 | BOLT, HEXAGON SOCKET HEAD | 1 | | | | |
| 15 | 5EB-2836A-00 | BRACKET 1 | 1 | | | | |
| 16 | 5EB-2836E-00 | BRACKET 2 | 1 | | | | |
| 17 | 99530-08012 | PIN, DOWEL | 2 | | | | |
| 18 | 90465-10030 | CLAMP | 1 | | | | |




5SL1300-B090

FIG. 9 INTAKE

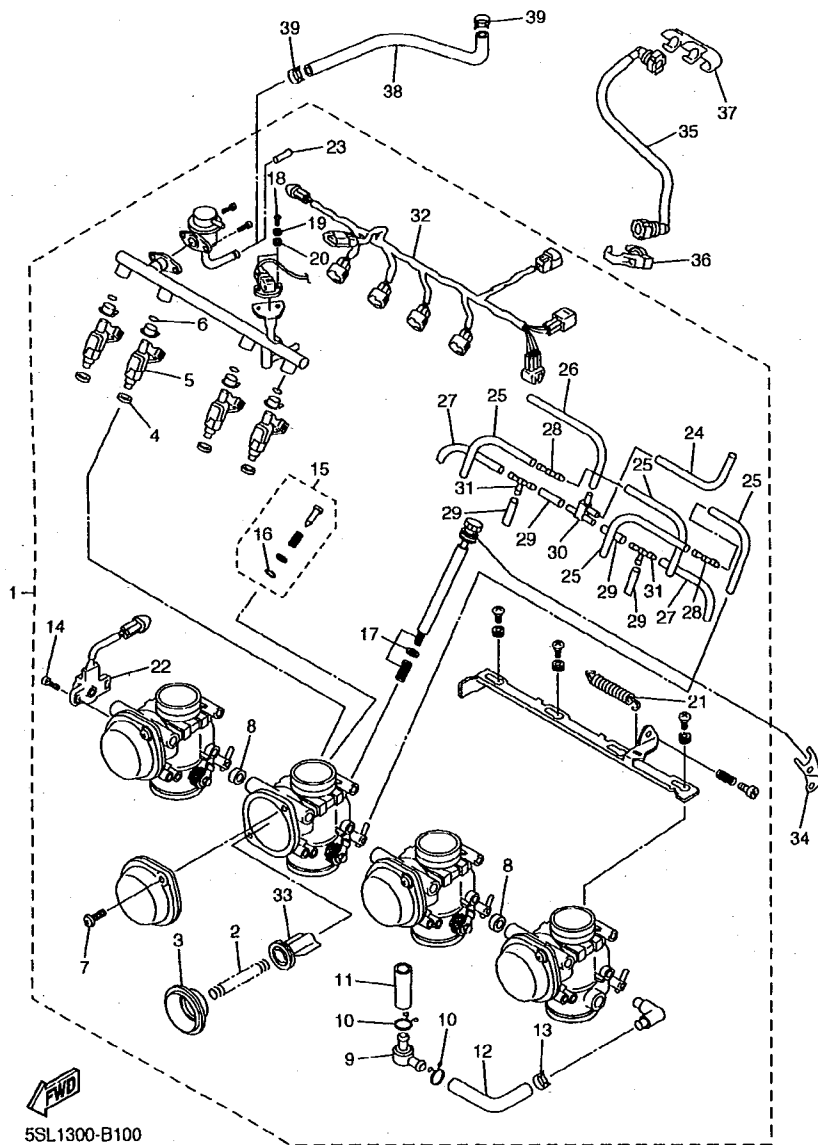
| REF. NO. | PART NO. | DESCRIPTION | 5SL1 | REMARKS |
|----------|--------------|-----------------------------|------|---------|
| 1 | 5SL-13586-00 | JOINT, CARBURETOR 1 | 2 | |
| 2 | 5SL-13596-00 | JOINT, CARBURETOR 2 | 2 | |
| 3 | 91317-06020 | BOLT | 8 | |
| 4 | 90450-63001 | HOSE CLAMP ASSY | 4 | |
| 5 | 5SL-14411-00 | CASE, AIR CLEANER 1 | 1 | |
| 6 | 5SL-14421-00 | CASE, AIR CLEANER 2 | 1 | |
| 7 | 5EB-14452-00 | SEAL | 1 | |
| 8 | 5EB-14462-00 | SEAL | 1 | |
| 9 | 98507-05025 | SCREW, PAN HEAD | 6 | |
| 10 | 5SL-14450-00 | ELEMENT ASSY, AIR CLEANER | 1 | |
| 11 | 5EB-1441F-01 | PARTITION, AIR CLEANER CASE | 1 | |
| 12 | 5EB-14457-00 | SEAL | 1 | |
| 13 | 5SL-14453-00 | JOINT, AIR CLEANER 1 | 4 | |
| 14 | 5SL-14469-00 | FUNNEL, AIR | 2 | |
| 15 | 5SL-14479-00 | FUNNEL | 2 | |
| 16 | 5SL-14477-00 | PLATE | 1 | |
| 17 | 97707-50120 | SCREW, TAPPING | 10 | |
| 18 | 90445-11795 | HOSE (L30) | 1 | |
| 19 | 90467-10041 | CLIP | 1 | |
| 20 | 90338-08174 | PLUG | 1 | |
| 21 | 5EB-14467-00 | SEAL | 1 | |
| 22 | 90450-53002 | HOSE CLAMP ASSY | 4 | |
| 23 | 5CA-14435-00 | GROMMET | 1 | |
| 24 | 90480-12314 | GROMMET | 1 | |
| 25 | 5SL-15373-00 | PIPE, BREATHER | 1 | |
| 26 | 90467-15054 | CLIP | 1 | |
| 27 | 5CA-85886-00 | SENSOR, AIR TEMPRATURE | 1 | |



FWD
5SL1300-B090

FIG. 9 INTAKE

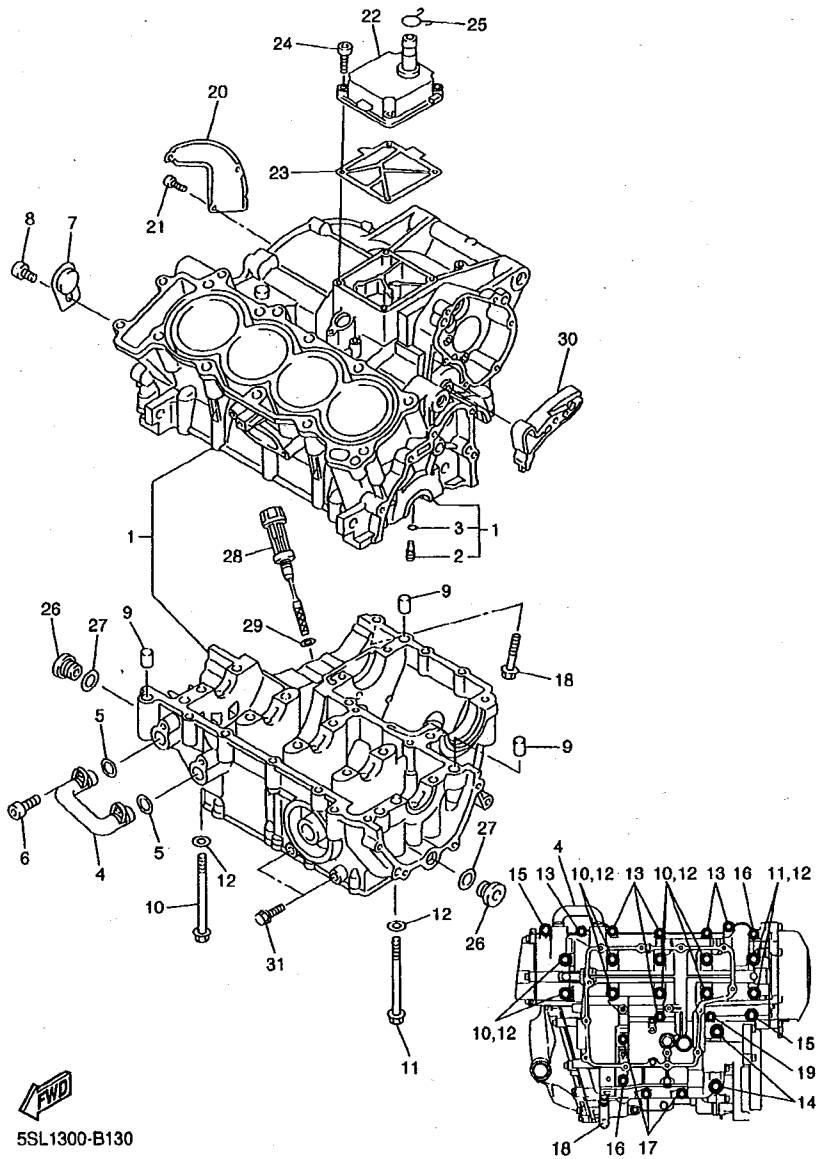
| REF. NO. | PART NO. | DESCRIPTION | SSL1 | | | | REMARKS |
|----------|--------------|-------------------|------|--|--|--|---------|
| 28 | 90387-065J6 | COLLAR | 1 | | | | |
| 29 | 90119-06172 | BOLT, WITH WASHER | 1 | | | | |
| 30 | 90467-17128 | CLIP | 2 | | | | |
| 31 | 5SL-12682-00 | PROTECTOR, HEAT | 1 | | | | |
| ----- | | | | | | | |
| ----- | | | | | | | |
| ----- | | | | | | | |
| ----- | | | | | | | |
| ----- | | | | | | | |
| ----- | | | | | | | |
| ----- | | | | | | | |
| ----- | | | | | | | |
| ----- | | | | | | | |
| ----- | | | | | | | |



5SL1300-B100

FIG. 10 INTAKE 2

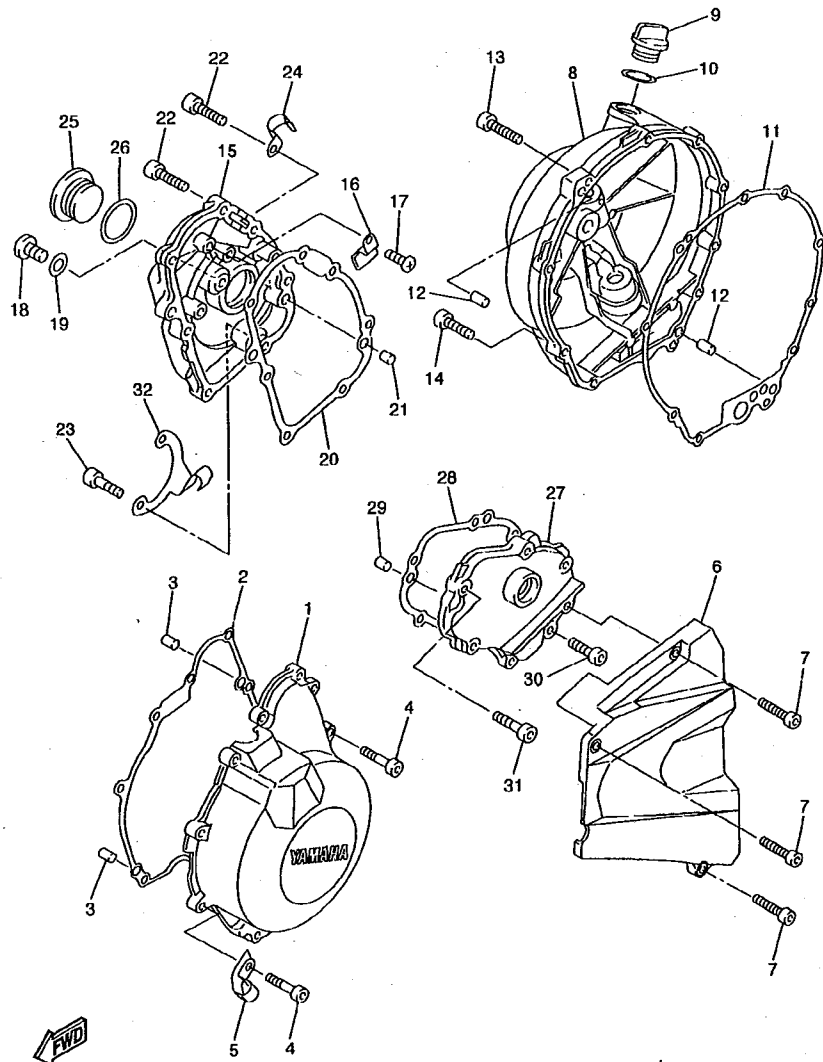
| REF. NO. | PART NO. | DESCRIPTION | SSL | REMARKS |
|----------|--------------|-------------------------|-----|---------|
| 1 | 5SL-13750-00 | THROTTLE BODY ASSY | 1 | |
| 2 | 4SV-14933-00 | .SPRING, DIAPHRAGM | 4 | |
| 3 | 5SL-24411-00 | .DIAPHRAGM | 4 | |
| 4 | 90430-09002 | .GASKET | 4 | |
| 5 | 5SL-13761-00 | .INJECTOR ASSY | 4 | |
| 6 | 5FL-14147-00 | .O-RING | 4 | |
| 7 | 4KM-14216-00 | .SCREW | 8 | |
| 8 | 5SL-14987-00 | .HOSE | 2 | |
| 9 | 3LN-24515-00 | .NET, FILTER 2 | 2 | |
| 10 | 90467-15012 | .CLIP | 4 | |
| 11 | 5SL-14148-00 | .PIPE | 2 | |
| 12 | 5SL-14348-00 | .PIPE 1 | 2 | |
| 13 | 90467-15001 | .CLIP | 2 | |
| 14 | 8CC-14216-10 | .SCREW | 2 | |
| 15 | 5JW-14104-00 | .AIR SCREW SET | 4 | |
| 16 | 3H1-14147-00 | .O-RING | 1 | |
| 17 | 5SL-14103-00 | .THROTTLE SCREW SET | 1 | |
| 18 | 98506-05016 | .SCREW, PAN HEAD | 2 | |
| 19 | 92906-05100 | .WASHER, SPRING | 2 | |
| 20 | 92906-05600 | .WASHER, PLATE | 2 | |
| 21 | 5JW-14589-00 | .SPRING | 1 | |
| 22 | 5SL-85885-00 | .THROTTLE SENSOR ASSY | 1 | |
| 23 | 5JW-14118-00 | .CAP | 1 | |
| 24 | 5SL-14349-00 | .PIPE | 1 | |
| 25 | 5PW-14396-00 | .PIPE | 4 | |
| 26 | 5PW-14349-00 | .PIPE | 1 | |
| 27 | 68V-13533-00 | .HOSE, VACUUM SENSING 4 | 2 | |



5SL1300-B130

FIG. 13 CRANKCASE

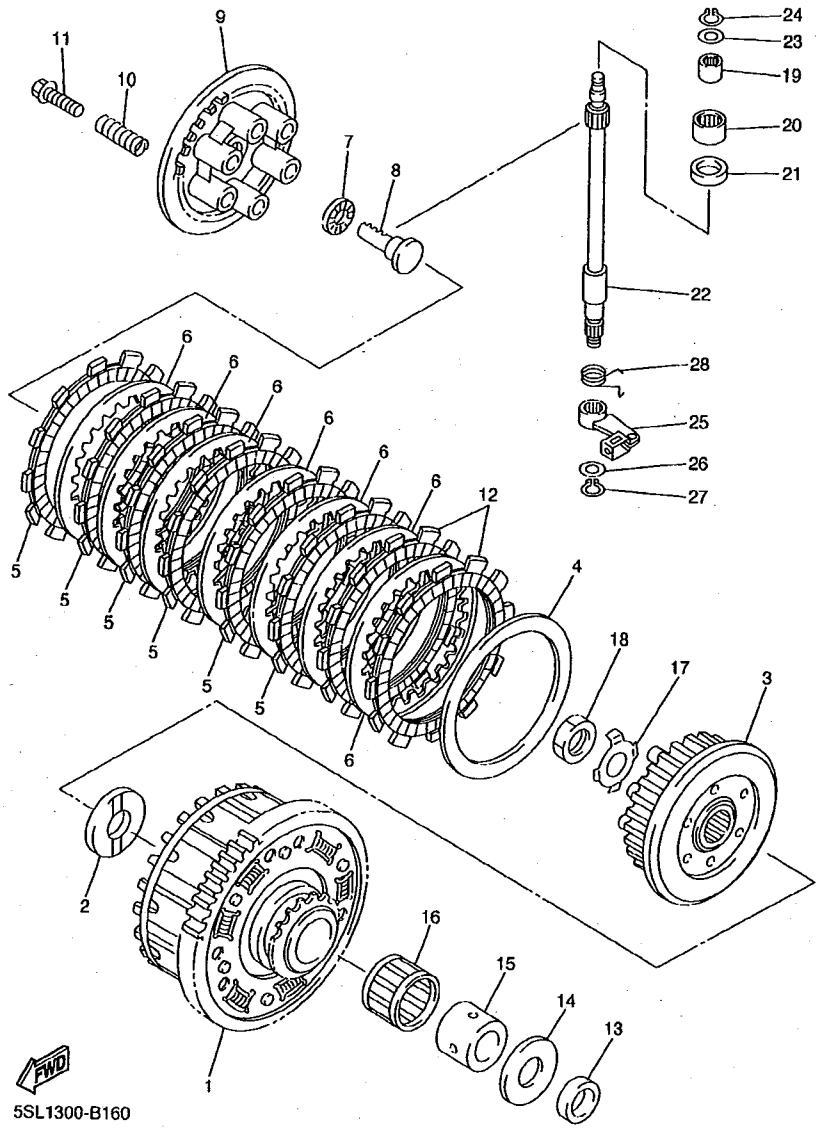
| REF. NO. | PART NO. | DESCRIPTION | SSL1 | | | | REMARKS |
|----------|--------------|---------------------------|------|--|--|--|---------|
| 1 | 5SL-15100-00 | CRANKCASE ASSY | 1 | | | | |
| 2 | 5EB-15155-00 | .NOZZLE 3 | 4 | | | | |
| 3 | 93210-04092 | .O-RING | 4 | | | | |
| 4 | 5EB-13418-00 | PIPE, OIL 2 | 1 | | | | |
| 5 | 93210-14579 | O-RING | 2 | | | | |
| 6 | 90110-06091 | BOLT, HEXAGON SOCKET HEAD | 2 | | | | |
| 7 | 5SL-15189-00 | PLUG | 1 | | | | |
| 8 | 90149-06020 | SCREW | 1 | | | | |
| 9 | 99530-10014 | PIN, DOWEL | 3 | | | | |
| 10 | 90105-087A0 | BOLT, FLANGE | 8 | | | | |
| 11 | 90105-086A9 | BOLT, FLANGE | 2 | | | | |
| 12 | 90201-087K3 | WASHER, PLATE | 10 | | | | |
| 13 | 95817-08055 | BOLT, FLANGE | 6 | | | | |
| 14 | 95817-08065 | BOLT, FLANGE | 2 | | | | |
| 15 | 90109-085G3 | BOLT | 2 | | | | |
| 16 | 95817-08065 | BOLT, FLANGE | 2 | | | | |
| 17 | 95817-06045 | BOLT, FLANGE | 3 | | | | |
| 18 | 95817-06100 | BOLT, FLANGE | 1 | | | | |
| 19 | 90105-06006 | BOLT, FLANGE | 1 | | | | |
| 20 | 5SL-11165-00 | PLATE, BREATHER | 1 | | | | |
| 21 | 90149-06020 | SCREW | 3 | | | | |
| 22 | 5SL-15413-00 | COVER | 1 | | | | |
| 23 | 5SL-15462-00 | GASKET, CRANKCASE COVER 3 | 1 | | | | |
| 24 | 91314-06025 | BOLT | 4 | | | | |
| 25 | 90467-14015 | CLIP | 1 | | | | |
| 26 | 36Y-15189-00 | PLUG | 2 | | | | |
| 27 | 93210-16325 | O-RING | 2 | | | | |



5SL1300-B140

FIG. 14 CRANKCASE COVER 1

| REF. NO. | PART NO. | DESCRIPTION | SSL1 | | | | REMARKS |
|----------|--------------|---------------------------|------|--|--|--|---------|
| 1 | 5SL-15411-00 | COVER, CRANKCASE 1 | 1 | | | | |
| 2 | 5SL-15451-00 | GASKET, CRANKCASE COVER 1 | 1 | | | | |
| 3 | 99530-08012 | PIN, DOWEL | 2 | | | | |
| 4 | 91314-06025 | BOLT | 9 | | | | |
| 5 | 90461-10006 | CLAMP | 1 | | | | |
| 6 | 5SL-15418-00 | COVER, CHAIN CASE | 1 | | | | |
| 7 | 91314-06025 | BOLT | 3 | | | | |
| 8 | 5SL-15421-00 | COVER, CRANKCASE 2 | 1 | | | | |
| 9 | 3F9-15362-00 | PLUG, OIL LEVEL | 1 | | | | |
| 10 | 93210-27194 | O-RING | 1 | | | | |
| 11 | 5SL-15461-00 | GASKET, CRANKCASE COVER 2 | 1 | | | | |
| 12 | 93608-17263 | PIN, DOWEL | 2 | | | | |
| 13 | 90109-06031 | BOLT | 9 | | | | |
| 14 | 90110-06071 | BOLT, HEXAGON SOCKET HEAD | 1 | | | | |
| 15 | 5SL-15416-00 | COVER, OIL PUMP | 1 | | | | |
| 16 | 90465-14011 | CLAMP | 1 | | | | |
| 17 | 98507-06012 | SCREW, PAN HEAD | 1 | | | | |
| 18 | 92014-08014 | BOLT, BUTTON HEAD | 1 | | | | |
| 19 | 90430-08143 | GASKET | 1 | | | | |
| 20 | 5SL-15456-00 | GASKET, OIL PUMP COVER 1 | 1 | | | | |
| 21 | 99530-08012 | PIN, DOWEL | 2 | | | | |
| 22 | 90109-06014 | BOLT | 5 | | | | |
| 23 | 90109-06015 | BOLT | 2 | | | | |
| 24 | 90465-08395 | CLAMP | 1 | | | | |
| 25 | 90340-32004 | PLUG, STRAIGHT SCREW | 1 | | | | |
| 26 | 93210-32172 | O-RING | 1 | | | | |
| 27 | 5SL-15425-00 | COVER, GENERATOR 2 | 1 | | | | |



FWD
5SL1300-B160

FIG. 16 CLUTCH

| REF. NO. | PART NO. | DESCRIPTION | 5SL1 | | | | REMARKS |
|----------|--------------|---------------------------|------|--|--|--|---------|
| 1 | 5SL-16150-00 | PRIMARY DRIVEN GEAR COMP. | 1 | | | | |
| 2 | 5EB-16154-00 | PLATE, THRUST 1 | 1 | | | | |
| 3 | 5SL-16371-00 | BOSS, CLUTCH | 1 | | | | |
| 4 | 168-16324-00 | PLATE, CLUTCH 1 (T=2.3) | 1 | | | | |
| 5 | 4FN-16321-00 | PLATE, FRICTION | 6 | | | | |
| 6 | 3J2-16324-00 | PLATE, CLUTCH 1 (T=2.0) | 7 | | | | |
| 7 | 93306-00304 | BEARING (B6003C4) | 1 | | | | |
| 8 | 5EB-16356-01 | ROD, PUSH 1 | 1 | | | | |
| 9 | 5EB-16351-01 | PLATE, PRESSURE 1 | 1 | | | | |
| 10 | 90501-237L0 | SPRING, COMPRESSION | 6 | | | | |
| 11 | 90159-06002 | SCREW, WITH WASHER | 6 | | | | |
| 12 | 5SL-16321-00 | PLATE, FRICTION | 2 | | | | |
| 13 | 90201-255A6 | WASHER, PLATE | 1 | | | | |
| 14 | 1AE-16164-00 | PLATE, THRUST 2 | 1 | | | | |
| 15 | 90560-25270 | SPACER | 1 | | | | |
| 16 | 93310-340N8 | BEARING | 1 | | | | |
| 17 | 90215-20004 | WASHER, LOCK | 1 | | | | |
| 18 | 90170-20008 | NUT | 1 | | | | |
| 19 | 93317-11020 | BEARING | 1 | | | | |
| 20 | 93315-31502 | BEARING | 1 | | | | |
| 21 | 93102-15212 | OIL SEAL | 1 | | | | |
| 22 | 5EB-16382-00 | AXLE, PUSH LEVER | 1 | | | | |
| 23 | 92907-08600 | WASHER, PLATE | 1 | | | | |
| 24 | 99001-07600 | CIRCLIP | 1 | | | | |
| 25 | 5SL-16340-00 | PUSH LEVER ASSY | 1 | | | | |
| 26 | 90201-10614 | WASHER, PLATE | 1 | | | | |
| 27 | 99001-09600 | CIRCLIP | 1 | | | | |

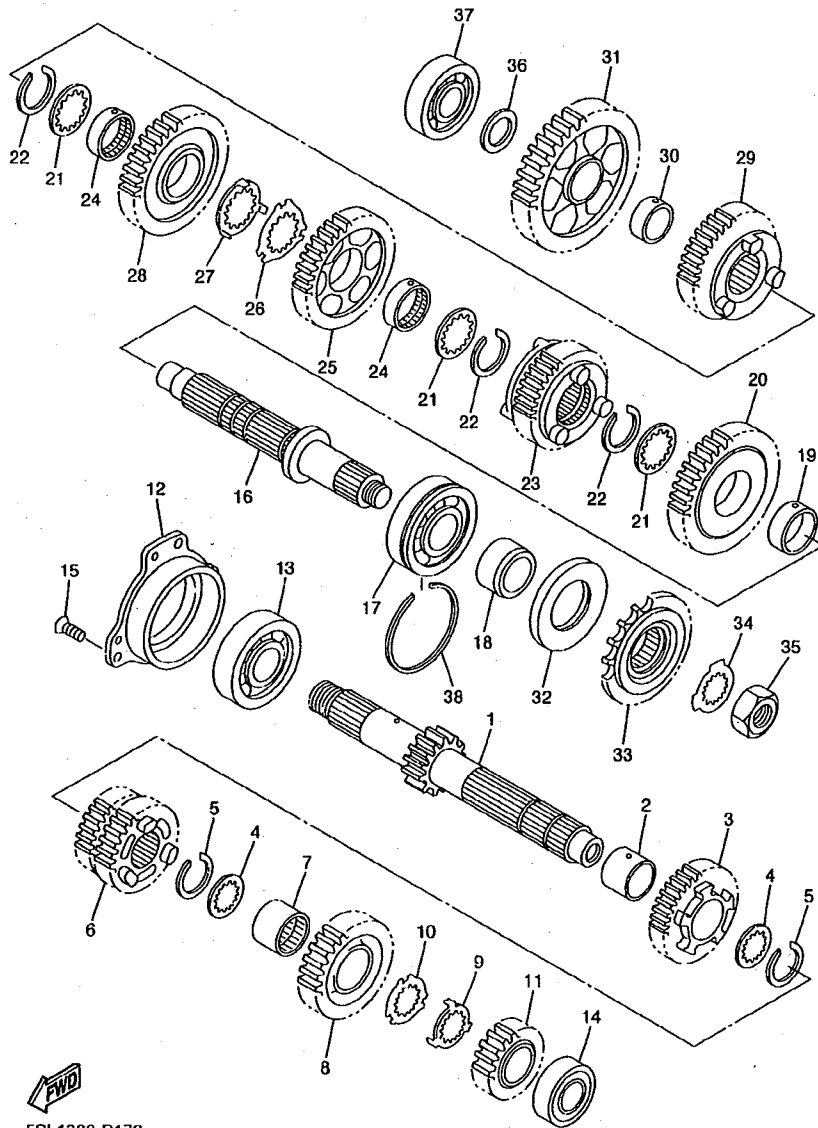


FIG. 17 TRANSMISSION

| REF. NO. | PART NO. | DESCRIPTION | SSL1 | | | | REMARKS |
|----------|--------------|----------------------------|------|--|--|--|---------|
| 1 | 5SL-17411-00 | AXLE, MAIN (13T) | 1 | | | | |
| 2 | 90387-253M6 | COLLAR | 1 | | | | |
| 3 | 5SL-17151-20 | GEAR, 5TH PINION (21T) | 1 | | | | |
| 4 | 90209-21332 | WASHER | 2 | | | | |
| 5 | 93440-25185 | CIRCLIP | 2 | | | | |
| 6 | 5SL-17131-20 | GEAR, 3RD PINION (18T/24T) | 1 | | | | |
| 7 | 90387-2513E | COLLAR | 1 | | | | |
| 8 | 5SL-17161-00 | GEAR, 6TH PINION (24T) | 1 | | | | |
| 9 | 90209-22352 | WASHER | 1 | | | | |
| 10 | 90209-21351 | WASHER | 1 | | | | |
| 11 | 5SL-17121-00 | GEAR, 2ND PINION (19T) | 1 | | | | |
| 12 | 5EB-15163-01 | HOUSING, BEARING 1 | 1 | | | | |
| 13 | 93306-30525 | BEARING (B6305) | 1 | | | | |
| 14 | 93306-20464 | BEARING | 1 | | | | |
| 15 | 90151-06008 | SCREW, COUNTERSUNK | 3 | | | | |
| 16 | 5SL-17421-00 | AXLE, DRIVE | 1 | | | | |
| 17 | 93306-30546 | BEARING (B6305A5 SPECIAL) | 1 | | | | |
| 18 | 90387-2504A | COLLAR | 1 | | | | |
| 19 | 90387-2813C | COLLAR | 1 | | | | |
| 20 | 5SL-17221-10 | GEAR, 2ND WHEEL (37T) | 1 | | | | |
| 21 | 90209-25342 | WASHER | 3 | | | | |
| 22 | 93440-28062 | CIRCLIP | 3 | | | | |
| 23 | 5SL-17261-10 | GEAR, 6TH WHEEL (26T) | 1 | | | | |
| 24 | 90387-2813D | COLLAR | 2 | | | | |
| 25 | 5SL-17241-00 | GEAR, 4TH WHEEL (32T) | 1 | | | | |
| 26 | 90209-25349 | WASHER | 1 | | | | |
| 27 | 90209-25350 | WASHER | 1 | | | | |

C11

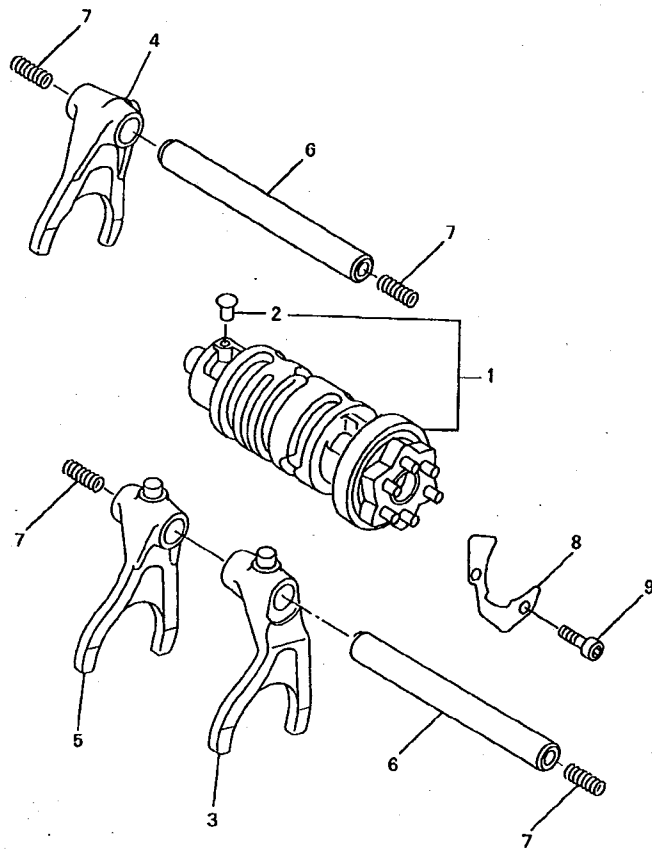


FIG. 18 SHIFT CAM. FORK

| REF. NO. | PART NO. | DESCRIPTION | QTY | REMARKS |
|----------|--------------|---------------------------|-----|---------|
| 1 | 5SL-18540-00 | SHIFT CAM ASSY | 1 | |
| 2 | 136-18542-00 | .POINT, NEUTRAL | 1 | |
| 3 | 5SL-18511-00 | FORK, SHIFT 1 | 1 | |
| 4 | 5MT-18512-00 | FORK, SHIFT 2 | 1 | |
| 5 | 5EB-18513-00 | FORK, SHIFT 3 | 1 | |
| 6 | 4XV-18531-00 | BAR, SHIFT FORK GUIDE 1 | 2 | |
| 7 | 90501-064L1 | SPRING, COMPRESSION | 4 | |
| 8 | 5EB-18536-00 | STOPPER, SHIFT BAR | 1 | |
| 9 | 90110-06018 | BOLT, HEXAGON SOCKET HEAD | 2 | |



5EB3351-9170

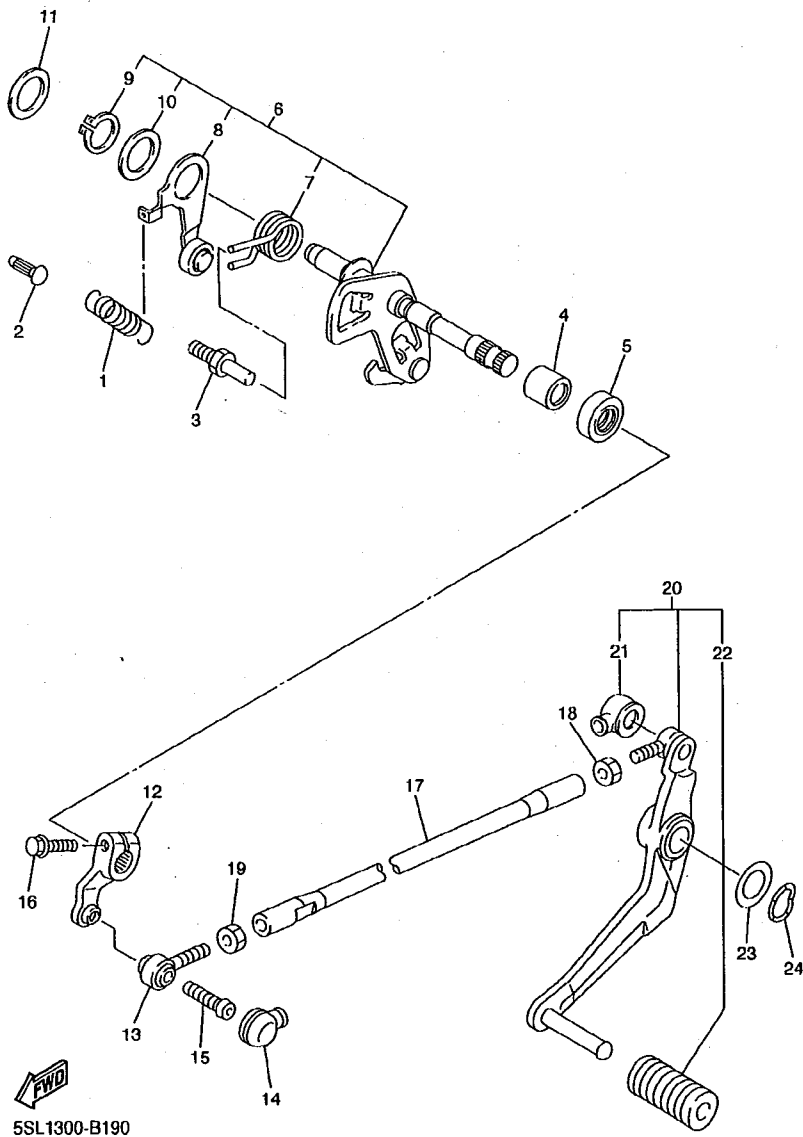


FIG. 19 SHIFT SHAFT

| REF. NO. | PART NO. | DESCRIPTION | 5SL1 | | | | | REMARKS |
|----------|--------------|-----------------------|------|--|--|--|--|---------|
| 1 | 90506-14003 | SPRING, TENSION | 1 | | | | | |
| 2 | 132-16346-00 | HOOK, SPRING | 1 | | | | | |
| 3 | 5SL-18127-00 | STOPPER, SCREW | 1 | | | | | |
| 4 | 93317-11287 | BEARING | 1 | | | | | |
| 5 | 93101-12004 | OIL SEAL | 1 | | | | | |
| 6 | 5SL-18101-00 | SHIFT SHAFT ASSY | 1 | | | | | |
| 7 | 90508-295B2 | .SPRING, TORSION | 1 | | | | | |
| 8 | 5SL-18140-00 | .STOPPER LEVER ASSY | 1 | | | | | |
| 9 | 99009-17400 | .CIRCLIP | 1 | | | | | |
| 10 | 90201-177G4 | .WASHER, PLATE | 1 | | | | | |
| 11 | 90201-154E8 | WASHER, PLATE (T=1.0) | 1 | | | | | |
| 12 | 5EB-18112-01 | ARM, SHIFT | 1 | | | | | |
| 13 | 5LV-18116-00 | JOINT, ROD 1 | 1 | | | | | |
| 14 | 4XV-18154-00 | COVER, DUST | 1 | | | | | |
| 15 | 90111-06019 | BOLT | 1 | | | | | |
| 16 | 95824-06020 | BOLT, FLANGE | 1 | | | | | |
| 17 | 5SL-18115-00 | ROD, SHIFT | 1 | | | | | |
| 18 | 90170-08358 | NUT | 1 | | | | | |
| 19 | 95304-06700 | NUT | 1 | | | | | |
| 20 | 5EB-18110-10 | SHIFT PEDAL ASSY | 1 | | | | | |
| 21 | 2H9-18154-00 | .COVER, DUST | 1 | | | | | |
| 22 | 5EB-18113-00 | .COVER, SHIFT PEDAL | 1 | | | | | |
| 23 | 90201-12013 | WASHER, PLATE | 1 | | | | | |
| 24 | 90206-12074 | WASHER, WAVE | 1 | | | | | |

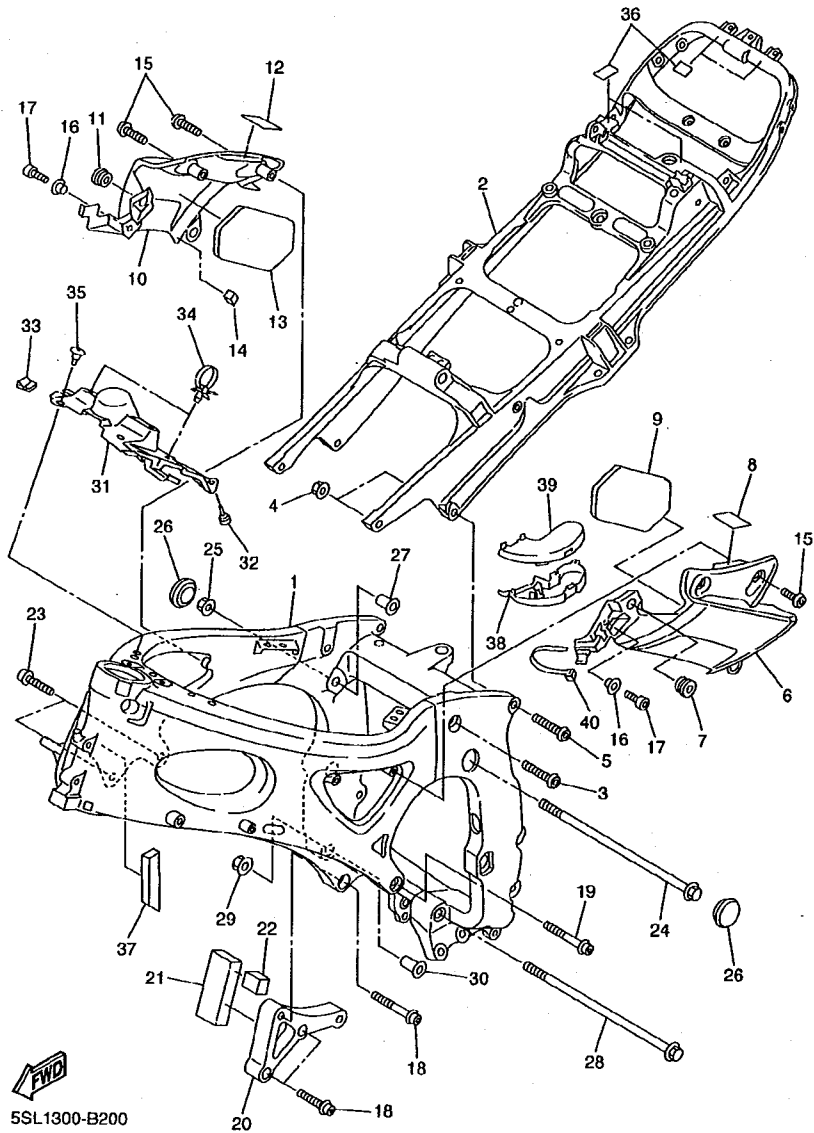


FIG. 20 FRAME

| REF. NO. | PART NO. | DESCRIPTION | 5SL1 | | | | REMARKS |
|----------|--------------|---------------------------|------|--|--|--|---------|
| 1 | 5SL-21110-00 | FRAME COMP. | 1 | | | | |
| 2 | 5SL-21190-00 | REAR FRAME COMP. | 1 | | | | |
| 3 | 90149-10007 | SCREW | 2 | | | | |
| 4 | 90185-10002 | NUT, SELF-LOCKING | 4 | | | | |
| 5 | 90149-10006 | SCREW | 2 | | | | |
| 6 | 5SL-2117V-00 | COVER 7 | 1 | | | | |
| 7 | 90480-13398 | GROMMET | 1 | | | | |
| 8 | 3KJ-24723-00 | DAMPER, SEAT | 1 | | | | |
| 9 | 5SL-28415-00 | DAMPER 1 | 1 | | | | |
| 10 | 5SL-2117W-00 | COVER 8 | 1 | | | | |
| 11 | 90480-13398 | GROMMET | 1 | | | | |
| 12 | 3KJ-24723-00 | DAMPER, SEAT | 1 | | | | |
| 13 | 5SL-28415-00 | DAMPER 1 | 1 | | | | |
| 14 | 5SL-21649-00 | DAMPER | 1 | | | | |
| 15 | 90111-05006 | BOLT | 4 | | | | |
| 16 | 90387-050X4 | COLLAR | 2 | | | | |
| 17 | 91317-05012 | BOLT | 2 | | | | |
| 18 | 90110-10008 | BOLT, HEXAGON SOCKET HEAD | 3 | | | | |
| 19 | 90110-10007 | BOLT, HEXAGON SOCKET HEAD | 1 | | | | |
| 20 | 5SL-21283-00 | SUPPORT, ENGINE | 1 | | | | |
| 21 | 5SL-21488-00 | DAMPER | 1 | | | | |
| 22 | 5SL-21486-00 | DAMPER 2 | 1 | | | | |
| 23 | 90110-10008 | BOLT, HEXAGON SOCKET HEAD | 2 | | | | |
| 24 | 90105-10042 | BOLT, FLANGE | 1 | | | | |
| 25 | 90179-10696 | NUT | 1 | | | | |
| 26 | 90338-27007 | PLUG | 2 | | | | |
| 27 | 5EB-21495-00 | BOLT, ENGINE ADJUSTING | 1 | | | | |

C15

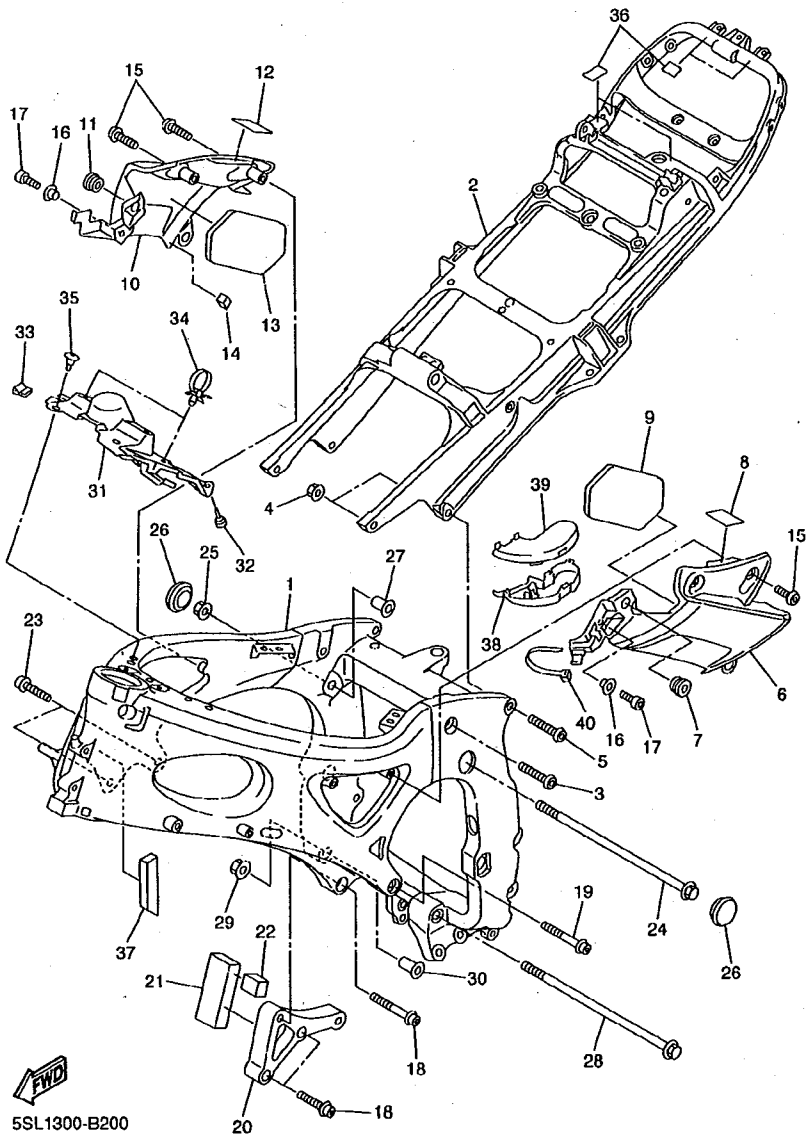
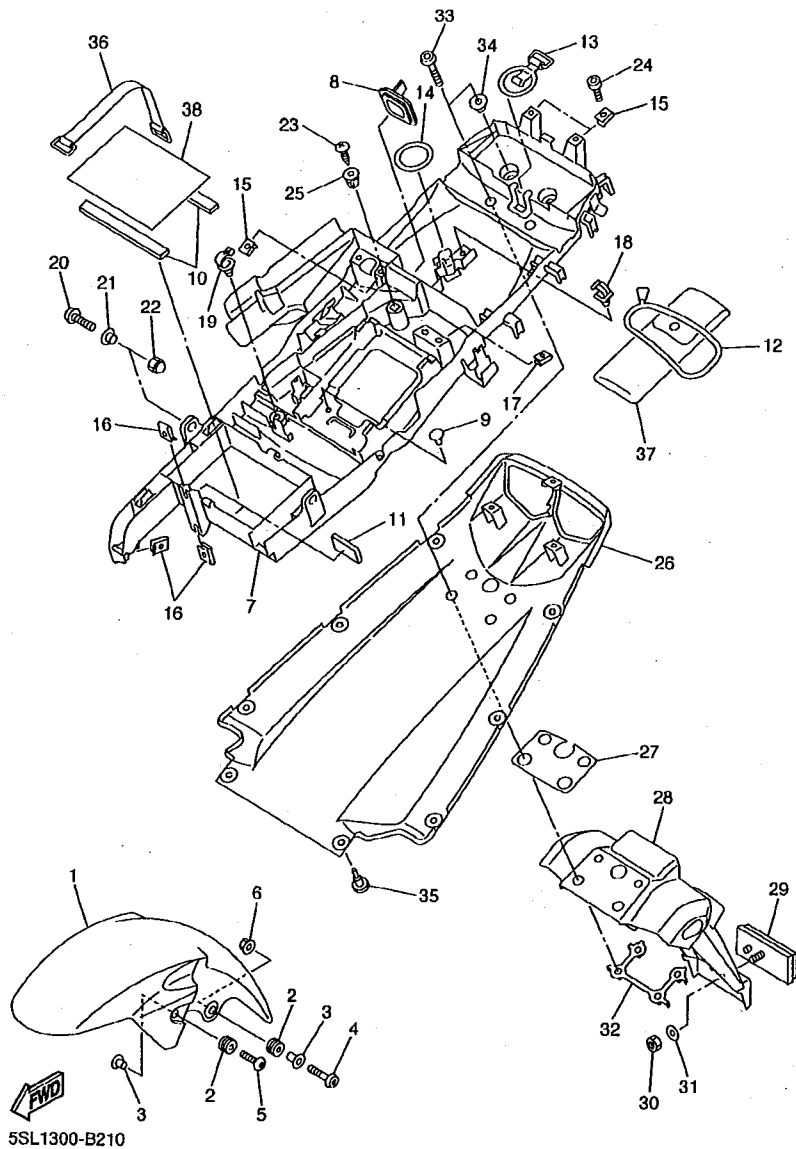


FIG. 20 FRAME

| REF. NO. | PART NO. | DESCRIPTION | 5SL1 | | | | REMARKS |
|----------|--------------|------------------------|------|--|--|--|---------|
| 28 | 90105-106A2 | BOLT, FLANGE | 1 | | | | |
| 29 | 90179-10696 | NUT | 1 | | | | |
| 30 | 5EB-21495-00 | BOLT, ENGINE ADJUSTING | 1 | | | | |
| 31 | 5SL-2117M-00 | COVER 2 | 1 | | | | |
| 32 | 36Y-21639-00 | DAMPER 2 | 2 | | | | |
| 33 | 5SL-21208-00 | SEAL SET, 1 | 1 | | | | |
| 34 | 90464-12036 | CLAMP | 2 | | | | |
| 35 | 90269-07077 | RIVET | 2 | | | | |
| 36 | 5SL-21268-00 | SEAL | 4 | | | | |
| 37 | 5SL-2139X-00 | DAMPER | 1 | | | | |
| 38 | 5SL-8258J-00 | HOUSING, CONNECTEUR 1 | 1 | | | | |
| 39 | 5SL-8259J-00 | HOUSING, CONNECTEUR 2 | 1 | | | | |
| 40 | 90464-15195 | CLAMP | 1 | | | | |

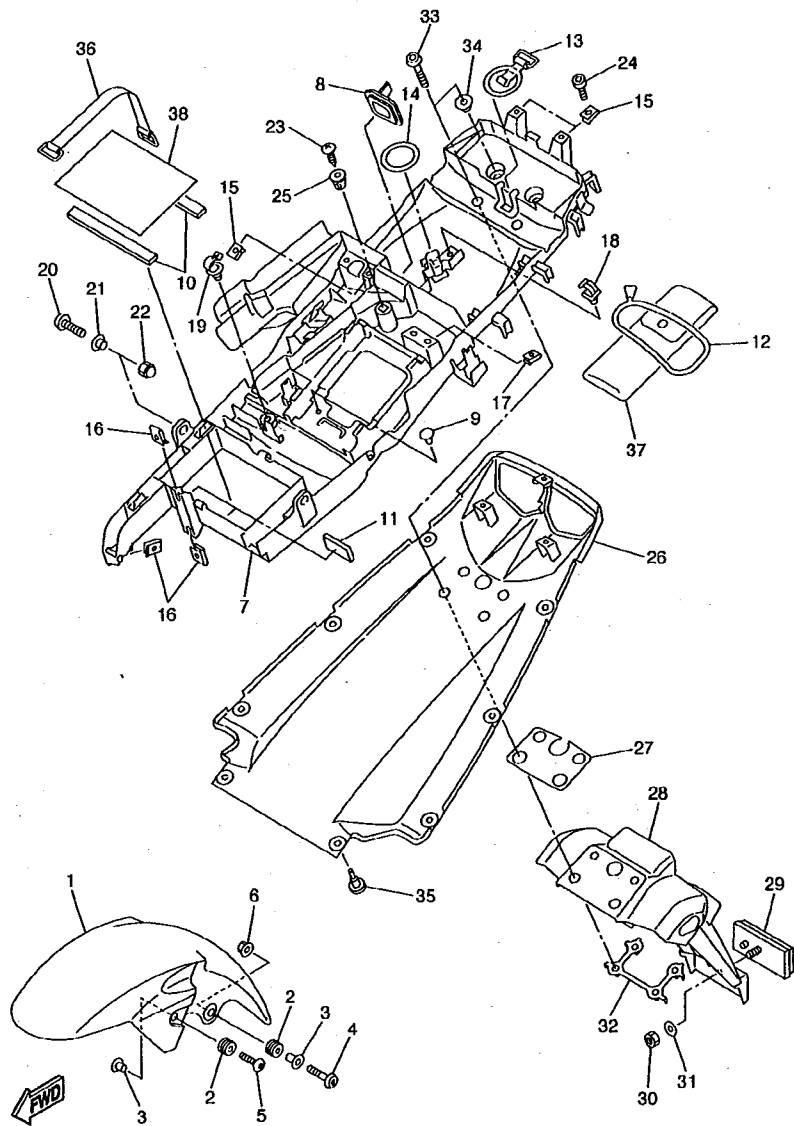


5SL1300-B210

FIG. 21 FENDER

| REF. NO. | PART NO. | DESCRIPTION | 5SL1 | REMARKS |
|----------|-----------------|-------------------|------|----------|
| 1 | 5SL-21511-00-P0 | FENDER, FRONT | 1 | UR VRC1 |
| | 5SL-21511-00-P1 | FENDER, FRONT | 1 | UR DPBMC |
| | 5SL-21511-00-P2 | FENDER, FRONT | 1 | UR S3 |
| | 5SL-21511-00-P3 | FENDER, FRONT | 1 | UR RYC1 |
| 2 | 90480-14003 | GROMMET | 4 | |
| 3 | 90387-06057 | COLLAR | 4 | |
| 4 | 90111-06040 | BOLT | 2 | |
| 5 | 92014-06025 | BOLT, BUTTON HEAD | 2 | |
| 6 | 95707-06500 | NUT, FLANGE | 2 | |
| 7 | 5SL-8212B-00 | BOX, BATTERY 1 | 1 | |
| 8 | 5MT-2172X-00 | COVER, TAILLIGHT | 1 | |
| 9 | 90338-06018 | PLUG | 2 | |
| 10 | 1AE-2834E-00 | DAMPER 1 | 2 | |
| 11 | 3KJ-24723-00 | DAMPER, SEAT | 5 | |
| 12 | 3YX-21376-00 | BAND, TOOL | 1 | |
| 13 | 5SL-21646-00 | BAND | 1 | |
| 14 | 5SL-21647-00 | BAND | 1 | |
| 15 | 90183-05076 | NUT, SPRING | 3 | |
| 16 | 90183-06053 | NUT, SPRING | 3 | |
| 17 | 90183-04039 | NUT, SPRING | 2 | |
| 18 | 90464-07259 | CLAMP | 1 | |
| 19 | 90464-13249 | CLAMP | 1 | |
| 20 | 90111-06007 | BOLT | 2 | |
| 21 | 90387-06022 | COLLAR | 2 | |
| 22 | 90176-06055 | NUT, CROWN | 2 | |
| 23 | 97707-60020 | SCREW, TAPPING | 1 | |
| 24 | 91317-05012 | BOLT | 2 | |

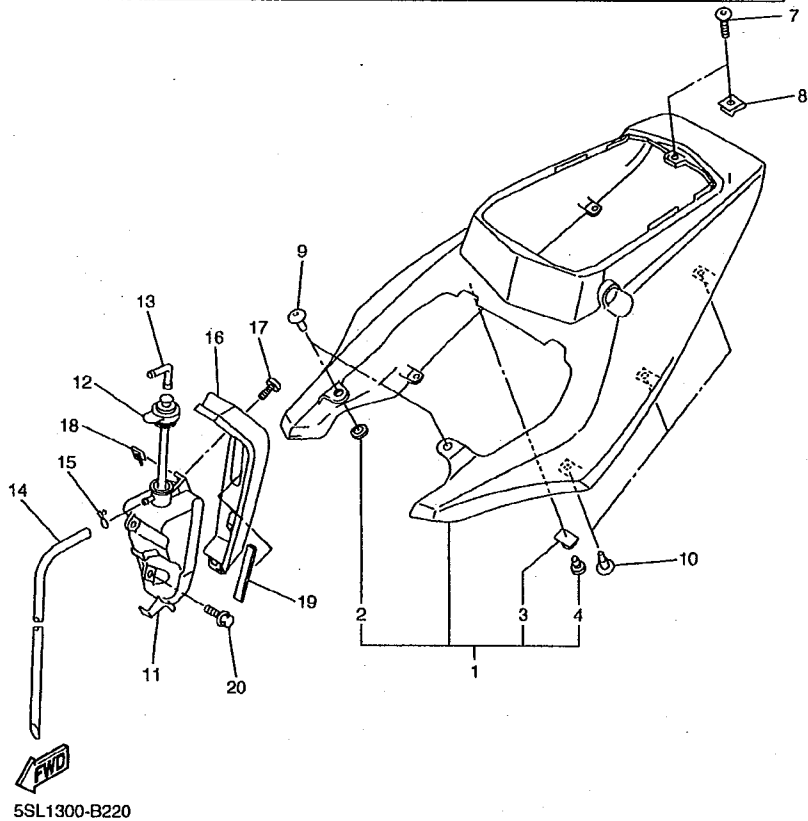
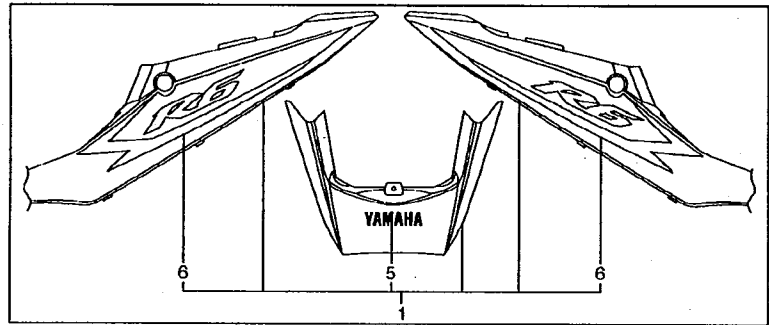
D3



5SL1300-B210

FIG. 21 FENDER

| REF. NO. | PART NO. | DESCRIPTION | 5SL1 | REMARKS |
|----------|-----------------|---------------------|------|----------|
| 25 | 90338-08226 | PLUG | 1 | |
| 26 | 5SL-21611-00-P0 | FENDER, REAR | 1 | UR VRC1 |
| | 5SL-21611-00-P1 | FENDER, REAR | 1 | UR DPBMC |
| | 5SL-21611-00-P2 | FENDER, REAR | 1 | UR S3 |
| | 5SL-21611-00-P3 | FENDER, REAR | 1 | UR RYC1 |
| 27 | 5SL-21669-00 | SEAL | 1 | |
| 28 | 5SL-21629-00 | GUARD, MUD | 1 | |
| 29 | 3Y6-85130-02 | REAR REFLECTOR ASSY | 1 | |
| 30 | 95807-05100 | NUT, U | 1 | |
| 31 | 90201-05725 | WASHER, PLATE | 1 | |
| 32 | 5PW-2161G-00 | BRACKET 6 | 1 | |
| 33 | 92017-06020 | BOLT, BUTTON HEAD | 4 | |
| 34 | 90387-065G0 | COLLAR | 2 | |
| 35 | 90269-07077 | RIVET | 2 | |
| 36 | 5JJ-82131-00 | BAND, BATTERY | 1 | |
| 37 | 5SL-28100-00 | TOOL KIT | 1 | |
| 38 | 5EB-14733-00 | MAT 1 | 1 | |



5SL1300-B220

FIG. 22 SIDE COVER

| REF. NO. | PART NO. | DESCRIPTION | 5SL1 | REMARKS |
|----------|-----------------|---------------------------|------|-------------------|
| 1 | 5SL-Y2171-00-P0 | COVER, SIDE 1 | 1 | UR VRC1 |
| | 5SL-Y2171-10-P1 | COVER, SIDE 1 | 1 | UR DPBMC |
| | 5SL-Y2171-20-P2 | COVER, SIDE 1 | 1 | UR S3 |
| | 5SL-Y2171-30-P3 | COVER, SIDE 1 | 1 | UR RYC1 |
| 2 | 5PW-2174X-00 | .DAMPER | 2 | |
| 3 | 5SL-2172E-00 | .STAY, SIDE COVER 1 | 1 | |
| 4 | 90338-08018 | .PLUG | 1 | |
| 5 | 99241-00080 | .EMBLEM, YAMAHA | 1 | UR FOR VRC1,DPBMC |
| | 99247-00080 | .EMBLEM, YAMAHA | 1 | UR FOR S3 |
| | 99244-00080 | .EMBLEM, YAMAHA | 1 | UR FOR RYC1 |
| 6 | 5SL-2173L-00 | .GRAPHIC SET 1 | 1 | UR FOR VRC1 |
| | 5SL-2173L-10 | .GRAPHIC SET 1 | 1 | UR FOR DPBMC |
| | 5SL-2173L-20 | .GRAPHIC SET 1 | 1 | UR FOR S3 |
| | 5SL-2173L-30 | .GRAPHIC SET 1 | 1 | UR FOR RYC1 |
| 7 | 90110-05201 | BOLT, HEXAGON SOCKET HEAD | 1 | |
| 8 | 90183-05076 | NUT, SPRING | 1 | |
| 9 | 90269-07076 | RIVET | 2 | |
| 10 | 90269-07077 | RIVET | 6 | |
| 11 | 5SL-21871-00 | TANK, RECOVERY | 1 | |
| 12 | 4NK-21875-00 | CAP | 1 | |
| 13 | 26H-21828-00 | ELBOW | 1 | |
| 14 | 90445-08376 | HOSE (L330) | 1 | |
| 15 | 90467-08003 | CLIP | 1 | |
| 16 | 5SL-2172W-00 | COVER | 1 | |
| 17 | 90111-05002 | BOLT | 2 | |
| 18 | 90183-050A0 | NUT, SPRING | 2 | |
| 19 | 5SL-21746-00 | DAMPER | 1 | |

D5

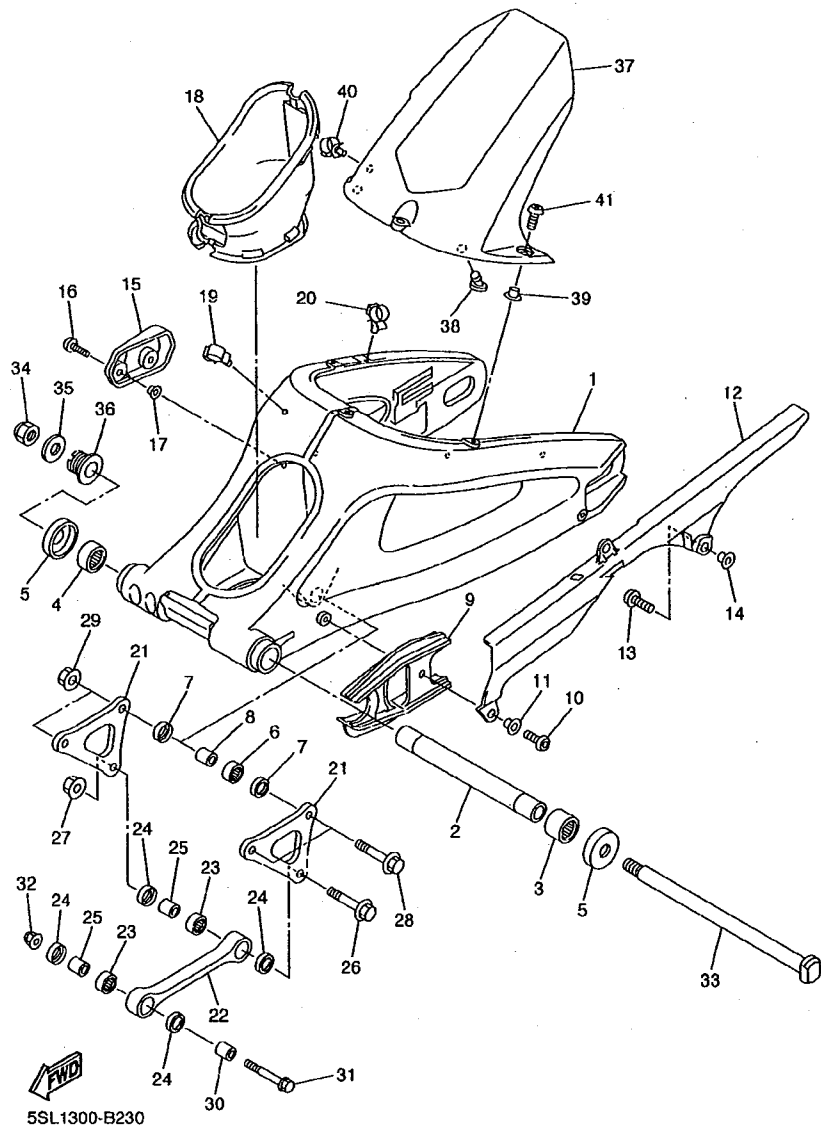


FIG. 23 REAR ARM

| REF. NO. | PART NO. | DESCRIPTION | 5SL1 | REMARKS |
|----------|--------------|---------------------------|------|---------|
| 1 | 5SL-22110-00 | REAR ARM COMP. | 1 | |
| 2 | 5EB-22184-00 | BUSH | 1 | |
| 3 | 93317-42550 | BEARING | 1 | |
| 4 | 93315-42536 | BEARING | 1 | |
| 5 | 5JJ-22128-00 | COVER, THRUST 1 | 2 | |
| 6 | 93315-41762 | BEARING | 1 | |
| 7 | 93109-17071 | OIL SEAL | 2 | |
| 8 | 90387-1012A | COLLAR | 1 | |
| 9 | 5SL-22151-00 | SEAL, GUARD | 1 | |
| 10 | 92017-08016 | BOLT, BUTTON HEAD | 1 | |
| 11 | 90387-062X0 | COLLAR | 1 | |
| 12 | 5SL-22311-00 | CASE, CHAIN | 1 | |
| 13 | 90110-06102 | BOLT, HEXAGON SOCKET HEAD | 2 | |
| 14 | 90387-06009 | COLLAR | 2 | |
| 15 | 5SL-22381-00 | COVER 1 | 1 | |
| 16 | 90111-06038 | BOLT | 2 | |
| 17 | 90387-06681 | COLLAR | 2 | |
| 18 | 5SL-2219X-00 | COVER | 1 | |
| 19 | 90464-16012 | CLAMP | 1 | |
| 20 | 90464-16011 | CLAMP | 1 | |
| 21 | 5SL-2217A-00 | ARM, RELAY | 2 | |
| 22 | 5SL-2217M-00 | ARM 1 | 1 | |
| 23 | 93315-31758 | BEARING | 2 | |
| 24 | 93109-17071 | OIL SEAL | 4 | |
| 25 | 90387-1012A | COLLAR | 2 | |
| 26 | 90105-10017 | BOLT, FLANGE | 1 | |
| 27 | 95607-10200 | NUT, SELF-LOCKING | 1 | |

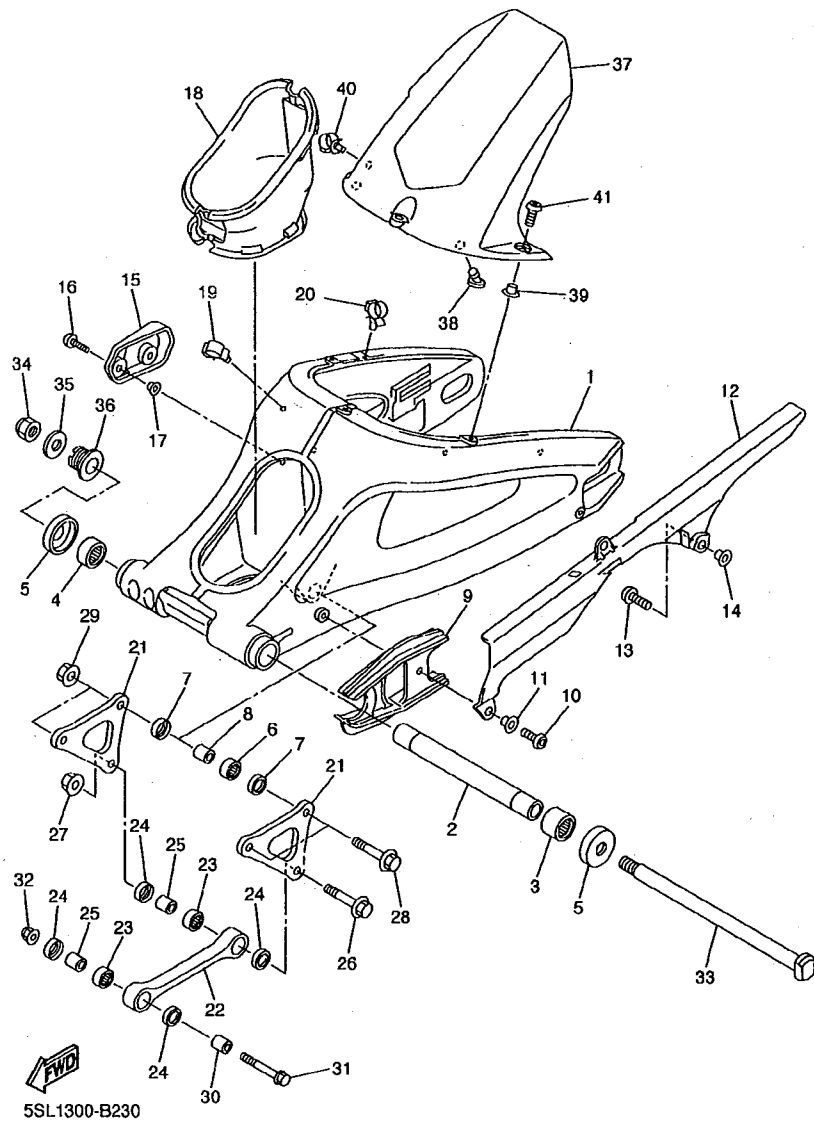


FIG. 23 REAR ARM

| REF. NO. | PART NO. | DESCRIPTION | SSL | | | | | REMARKS |
|----------|--------------|-------------------|-----|--|--|--|--|---------|
| 28 | 90105-10017 | BOLT, FLANGE | 2 | | | | | |
| 29 | 95607-10200 | NUT, SELF-LOCKING | 2 | | | | | |
| 30 | 90387-1013U | COLLAR | 1 | | | | | |
| 31 | 90105-10018 | BOLT, FLANGE | 1 | | | | | |
| 32 | 95607-10200 | NUT, SELF-LOCKING | 1 | | | | | |
| 33 | 4FN-22141-00 | SHAFT, PIVOT | 1 | | | | | |
| 34 | 90185-18104 | NUT, SELF-LOCKING | 1 | | | | | |
| 35 | 90201-186M4 | WASHER, PLATE | 1 | | | | | |
| 36 | 5PW-22125-00 | BOLT | 1 | | | | | |
| 37 | 5SL-21650-00 | REAR FENDER COMP. | 1 | | | | | |
| 38 | 5SL-21639-00 | DAMPER 2 | 2 | | | | | |
| 39 | 90387-07717 | COLLAR | 3 | | | | | |
| 40 | 90464-16012 | CLAMP | 1 | | | | | |
| 41 | 90111-06038 | BOLT | 3 | | | | | |